

INSTALLATION INSTRUCTIONS

4121 F-150 REGULAR CAB (NEW BODY STYLE) 04 - 08

PARTS LIST:

QTY:

- (1) Sidebar set
Driver & Passenger
- (1) Front bracket set
Driver & Passenger
- (1) Rear brackets set
Driver & Passenger
- (1) Auxiliary front bracket set
- (2) 1/2" Bolt plate
- (2) 5/16" Bolt plate
- (2) fixation Bracket

(1) HARDWARE KIT

- (4) 1/2 x 2" hex. head bolts
- (10) 1/2" flat washers
- (6) 1/2" lock washers
- (4) 1/2" lock nuts
- (4) 3/8 x 1" carriage head bolt.
- (4) 3/8 x 1" hex. head bolts
- (2) 5/16" lock washers
- (2) 5/16" hex nut.
- (4) 3/8" lock washers
- (10) 3/8" flat washers
- (4) 3/8" lock nuts
- (2) 3/8" Clip nut.
- (4) Round vinyl gasket
- (2) 1/2" hex lock nuts

TOOLS REQUIRED:

- | | | | |
|-------------|--------------|-------------|-------------------|
| 3/4" Socket | 9/16" Socket | 1/2" Socket | Ratchet extension |
| 3/4" Wrench | 9/16" Wrench | 1/2" Wrench | Ratchet |

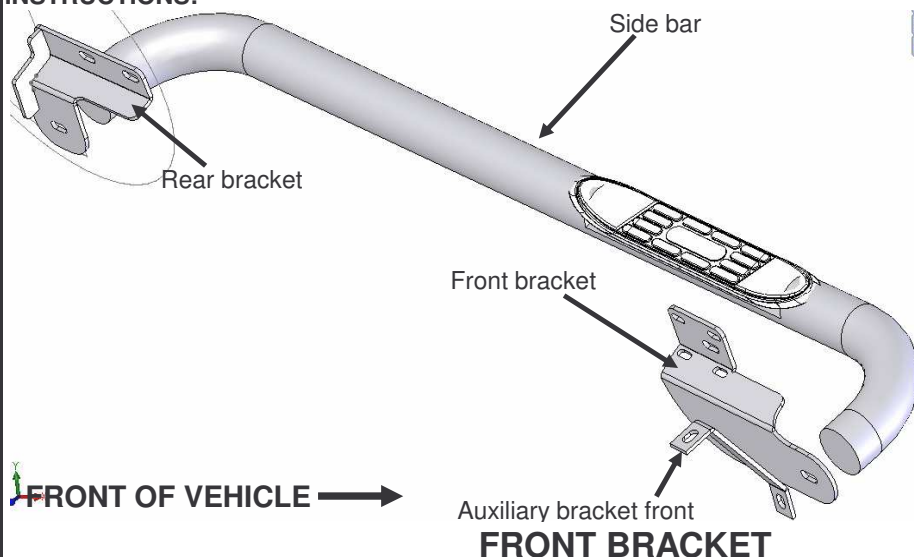
INSTRUCTIONS:

Aproximated installation time: 35 min.

1. Read and understand instructions completely before beginning installation.

2. To install front mounting bracket, locate and remove the plastic cover on the rocker panel. **Photo 1 & 2.** Then introduce into the upper hole located on the front side of the vehicle a clip nut. Also insert a 1/2" bolt plate in the circled hole in the same side. Repeat on the opposite side.

5. To ins hole and for



FRONT →

To install front bracket remove this plastic cover driver side

In this hole, fix the bracket with a 3/8" carriage head bolt. Driver side.

Cleaning and care instructions:

Protect the finish with a non-abrasive automotive wax, (e.g. Pure Carnauba) on a regular basis. The use of any soap, polish, or wax that contains an abrasive is detrimental to the finish, as the compounds scratch the finish and cause corrosion.

Design:

Quality:

Revisado 10/01/2008

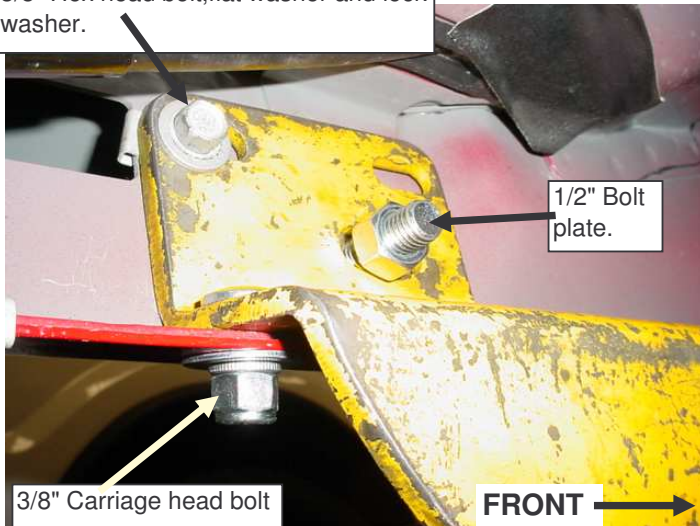
G:\Usuarios\Diseno\Instructivos PDF\37S\37133-R (1).Pdf

INSTALLATION INSTRUCTIONS

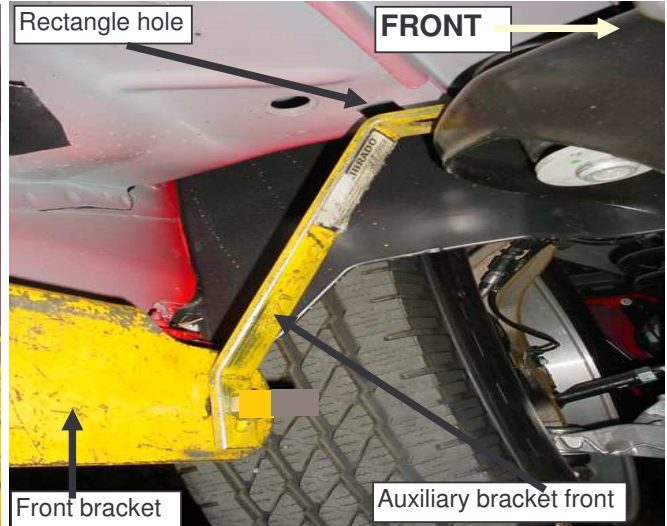
4121

3. Place the front mounting bracket onto the clip nut and the bolt plate before installed. Attach the clip nut using: (1) 3/8" hex head bolt, (1) 3/8" flat washer, (1) 3/8" lock washer. **In clip nut.** leave loose. **In the inferior hole** on the rocker panel fix the bracket using: (1) 3/8" carriage head bolt (1) 3/8" flat washer, (1) 3/8" lock washer. (1) 3/8" lock nut. To attach bolt plate use: (1) 1/2" flat washer, (1) 1/2" lock washer, (1) 1/2" hex nut. **Photo 3.** leave loose. Repeat for the

3/8" Hex head bolt,flat washer and lock washer.



DRIVER SIDE

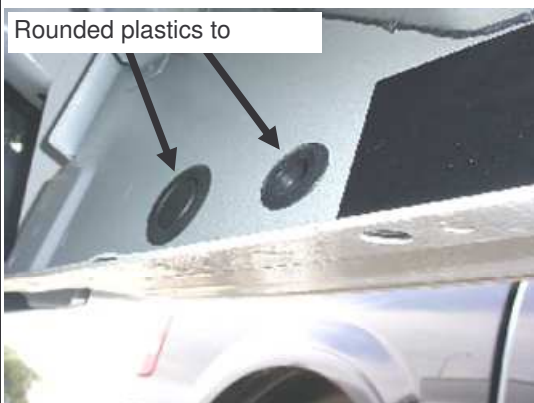


DRIVER SIDE.

4. To install the auxiliary brackets find a rectangle hole located up from the front bracket place, insert the 5/16" bolt plate in the hole with the bolt outside. Place the auxiliary bracket in the bolt plate and fix with: (1) 3/8" Flat washer, (1) 5/16" lock washer, (1) 5/16" hex nut. **Photo 4.** leave loose. Repeat for the opposite side.

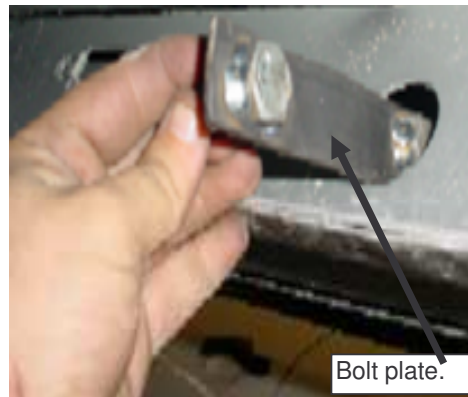
REAR BRACKET

5. To install the rear bracket locate and remove the rounded plastics on the rocker panel.**Photo 6.** Insert the bolt plate in the hole and place it as shown in the **photo 6.** Put a vynil gasket in the bolt to avoid the bracket falls inside the panel. Repeat for the opposite side.



DRIVER SIDE.

PHOTO 5.



DRIVER SIDE.

PHOTO 6.

FRONT →

Cleaning and care instructions:

Protect the finish with a non-abrasive automotive wax, (e.g. Pure Carnauba) on a regular basis. The use of any soap, polish, or wax that contains an abrasive is detrimental to the finish, as the compounds scratch the finish and cause corrosion.

Revisado 10/01/2008

G:\Usuarios\Diseno\Instructivos PDF\37S\37133-R (1).Pdf

Design:

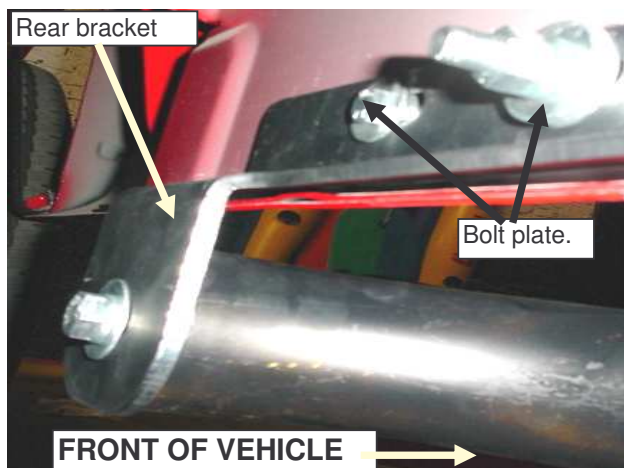
Quality:

INSTALLATION INSTRUCTIONS

4121

6. Place the rear bracket and attach with: (1) 1/2" flat washer, (1) lock nut, in each bolt. Repeat for the oppsite side. Leave loose.

PHOTO 7.



Choose any bolt and put a vynil gasket to avoid the bracket falls inside the panel.

DRIVER SIDE

7. Place the side bar in the front and rear bracket, and attach with:(1) 1/2 x 2" Hex head bolt,(1) 1/2" Flat washers,(1) 1/2" Lock washer. For each bracket.Leave loose.**NOTE: In the front side fix at the same time the auxiliary and the front bracket.** Repeat for the opposite side.

8.Make any final alignment and tighten all bolts. Repeat for the opposite side.

9.You may need to retighten all bolts periodically.



DRIVER SIDE.

SIDE BAR

Cleaning and care instructions:

Protect the finish with a non-abrasive automotive wax, (e.g. Pure Carnauba) on a regular basis. The use of any soap, polish, or wax that contains an abrasive is detrimental to the finish, as the compounds scratch the finish and cause corrosion.

Revisado 10/01/2008

G:\Usuarios\Diseño\Instructivos PDF\37S\37133-R (1).Pdf

Design:

Quality: