

INSTALLATION INSTRUCTIONS

4232

92 – 98 Jeep Grand Cherokee 4 Dr
 “Except Laredo”

Parts List :

QTY	(1) Hardware kit including :	
(1) Sidebar set (Driver & Passenger)	(2) 1/2 x 1 1/2" Hex head bolts	(10) 3/8" Flat washers
(2) Front mounting brackets	(4) 1/2 x 1 1/2" Carriage cut head bolts	(10) 3/8" Lock washers
(2) Rear mounting brackets	(6) 1/2" Flat washers	(6) 3/8" Hex nuts
(2) Auxiliary rear mounting brackets	(6) 1/2" Lock washers	(2) 1/4" Flat washers
(2) 1/4" Special bolts	(4) 1/2" Hex nuts	(2) 1/4" Lock washers
(4) 3/8" Special bolts	(6) 3/8 x 1 1/4" Hex head bolts	(2) 1/4" Hex nuts

Tools Required :

3/4" Socket	3/4" Wrench	7/16" Socket
9/16" Socket	Ratchet	9/16" Wrench

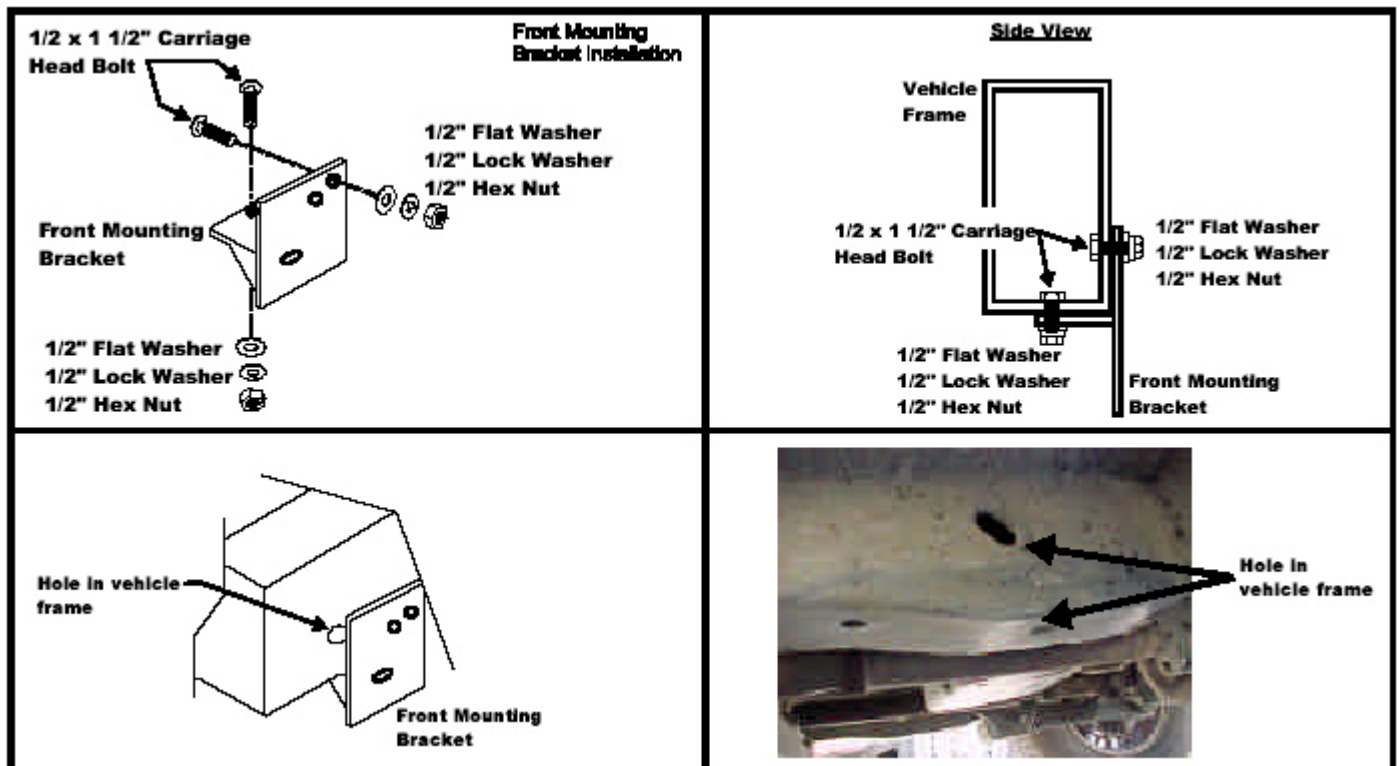
Instructions :

Approximated installation time: 30 min.

1. Read and understand instructions completely before beginning installation.
2. Sidebar set consist of a driver and passenger side. Be sure to determinate the correct side before installation.
3. Place the 1/2 x 1 1/2" carriage cut head bolts into the top hole and rear hole in the front mounting bracket and thread a 1/2" flat washer, lock washer and hex nut onto each one. Do not tighten the bolts at this time. Illustration 1.
4. Place the front mounting bracket up to the vehicle frame. Place the heads of the 1/2 x 1 1/2" carriage cut head bolts into the holes in the vehicle frame and turn it 90 degrees so it catches on the edges of the hole in the vehicle frame and then hand tighten until snug.
5. To install rear mounting bracket, locate existing holes in the frame of the vehicle as shown in Picture 1. Then place 3/8" special bolts into the existing frame holes and bolt rear mounting bracket using 3/8" flat & lock washers and hex nuts. Leave loose.
6. To install auxiliary rear mounting bracket, locate existing hole in the frame of the vehicle located above the o-bround hole in the rear mounting bracket. Pass through the existing hole a 1/4" special bolt as shown in Picture 2. Secure auxiliary rear mounting bracket to the 1/4" special bolt using 1/4" flat & lock washers and hex nut. Picture 3. Secure to the rear mounting bracket using 3/8 x 1 1/4" hex head bolt with corresponding nut and washer. Do not tighten.
7. Place the sidebar up to the front and rear mounting brackets. Bolt to the front mounting bracket using a 1/2 x 1 1/2" hex head bolt, flat and lock washers. Bolt to the rear mounting bracket using the 3/8 x 1 1/4" hex head bolts, flat and lock washers. Leave loose.
8. Make any final adjustments to the alignment of the sidebar and tighten all bolts. Repeat for the opposite side.
9. You may need to periodically re-tighten the bolts.

Assembly Diagram :

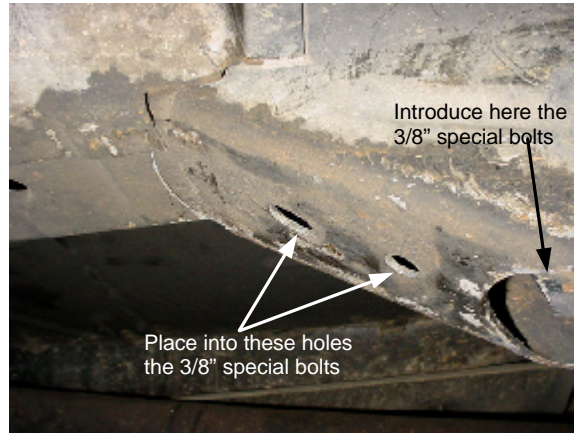
Illustration 1



INSTALLATION INSTRUCTIONS

4232

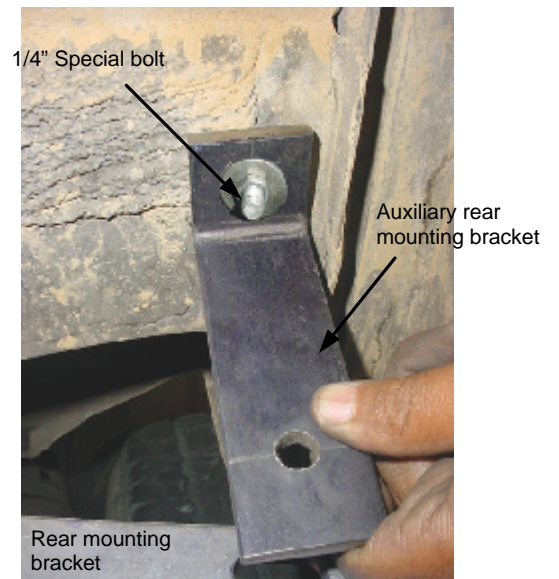
Picture 1



Picture 2



Picture 3



Cleaning and care instructions :

Protect the finish with a non-abrasive automotive wax, (e.g. Pure Carnauba) on a regular basis. The use of any soap, polish, or wax that contains an abrasive is detrimental to the finish, as the compounds scratch the finish and cause corrosion.