

INSTALLATION INSTRUCTIONS

4236

84 – 01 Jeep Cherokee Sport 4 Dr

Parts List :

QTY

- (1) Sidebar set
(Driver & Passenger)
- (2) Front mounting brackets
- (2) Rear mounting brackets
- (8) Special bolt

- (1) Hardware kit including :
 - (2) 1/2 x 1 1/2" Hex head bolts
 - (10) 1/2" Flat washers
 - (10) 1/2" Lock washers
 - (8) 1/2" Hex nuts
 - (4) 3/8 x 1 1/4" Hex head bolts
 - (4) 3/8" Flat washers
 - (4) 3/8" Lock washers

Tools Required :

- 3/4" Socket
- 9/16" Socket
- 3/4" Wrench
- Ratchet

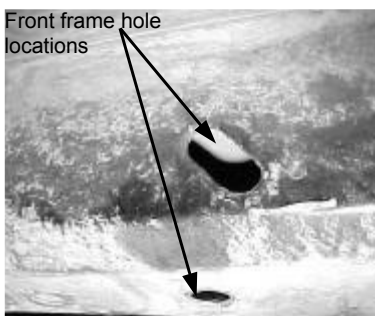
Instructions :

Approximated installation time: 30 min.

1. Read and understand instructions completely before beginning installation.
2. Sidebar set consist of a driver and passenger side. The bent leg is the front leg. Be sure to determinate the correct side before installation.
3. Locate at front and rear of frame of vehicle the existing holes. Then introduce the special bolt as shown in Picture 2 and place into the existing holes as shown in Picture 3.
4. Place the front and rear mounting bracket up to the vehicle frame and secure to the special bolts using 1/2" flat & lock washers and hex nut. Hand tighten at this time. Picture 4 & 5.
5. Place the sidebar up to the front and rear mounting brackets. Bolt to the front mounting bracket using a 1/2 x 1 1/2" hex head bolt, flat and lock washers. Bolt to the rear mounting bracket using the 3/8 x 1 1/4" hex head bolts, flat and lock washers. Leave loose.
6. Make any final adjustments to the alignment of the sidebar and tighten all bolts. Repeat for the opposite side.
7. You may need to periodically re-tighten the bolts.

Assembly Diagram :

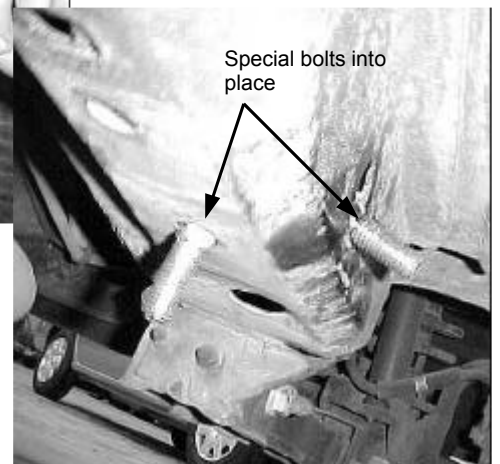
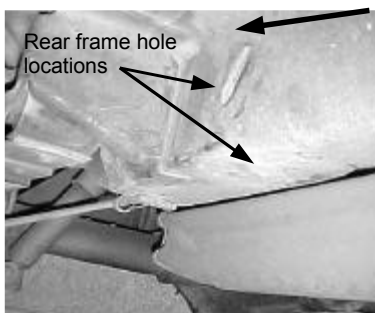
Picture 1



Picture 2



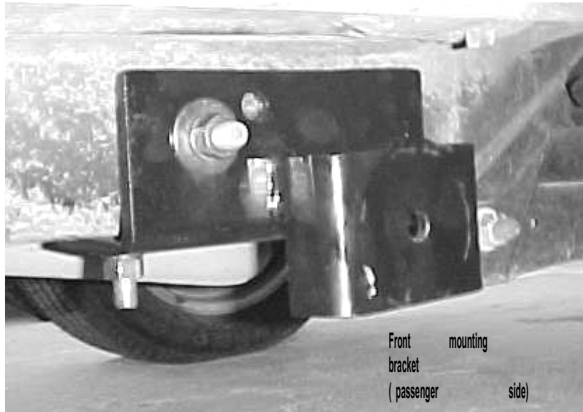
Picture 3



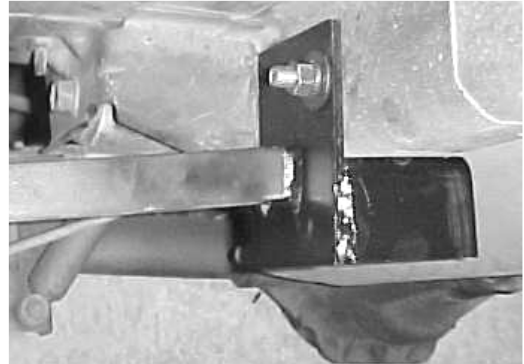
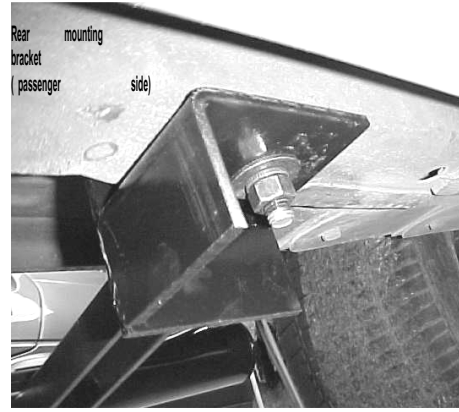
INSTALLATION INSTRUCTIONS

4236

Picture 4



Picture 5



Cleaning and care instructions :

Protect the finish with a non-abrasive automotive wax, (e.g. Pure Carnauba) on a regular basis. The use of any soap, polish, or wax that contains an abrasive is detrimental to the finish, as the compounds scratch the finish and cause corrosion.