

# INSTALLATION INSTRUCTIONS

## 61415 SIDE BAR

### 07-13 TOYOTA TUNDRA DOUBLE CAB 4DR 2/4WD

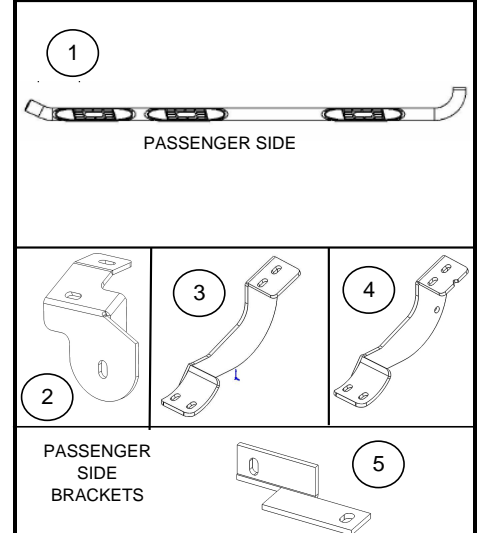
#### Parts List:

| ITEM | QTY.     | DESCRIPTION                             | TORQUE MAX. |
|------|----------|-----------------------------------------|-------------|
| 1    | 1        | Side Bar set                            | -           |
|      | <b>1</b> | <b>BRK-37689 Brackets kit includes:</b> | -           |
| 2    | 1        | Front mounting brackets set             | -           |
| 3    | 1        | Central mounting brackets set           | -           |
| 4    | 1        | Rear mounting brackets set              | -           |
| 5    | 1        | Auxiliary rear mounting brackets set    | -           |
|      | <b>1</b> | <b>KTE-37689 Hardware kit includes:</b> | -           |
| 6    | 14       | M8x30mm Hex head bolt zinc plated       | 23 Lb.Ft    |
| 7    | 14       | 5/16" Flat washer zinc plated           | -           |
| 8    | 14       | 5/16" Lock washer zinc plated           | -           |
| 9    | 1        | M8 hex nut zinc plated                  | 23 Lb.Ft    |
| 10   | 2        | 1/2 x 2" hex head bolt zinc plated      | 75 Lb.Ft    |
| 11   | 2        | 1/2" Flat washer zinc plated            | -           |
| 12   | 2        | 1/2" Lock washer zinc plated            | -           |
| 13   | 10       | 3/8 x 1" hex head bolt zinc plated      | -           |
| 14   | 10       | 3/8" lock washer zinc plated            | -           |
| 15   | 10       | 3/8" flat washer zinc plated            | 30 Lb.Ft    |
| 16   | 2        | 3/8" hex nut zinc plated                | -           |

#### Required Tools (not included)

| DESCRIPTION           | QTY |
|-----------------------|-----|
| 9/16" Socket / wrench | 1   |
| 3/4" Socket / wrench  | 1   |
| Ratchet               | 1   |
| Ratchet extension     | 1   |
| 3/16" Wrench allen    | 1   |

#### ILLUSTRATION 1

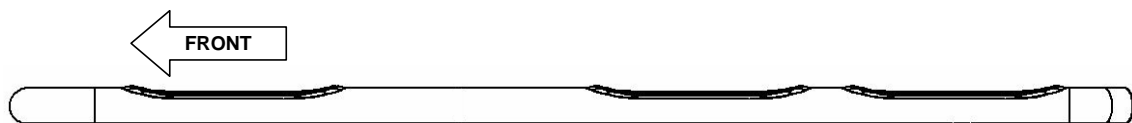


#### Instructions:

**Approximate installation time: 40 min.**

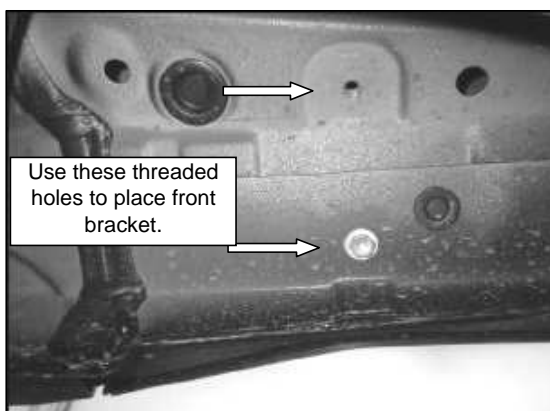
Before beginning the installation, please read all directions carefully and verify all necessary hardware is accounted for. If any parts are missing, stop the installation and contact your distributor immediately.

#### DRIVER'S SIDE SHOWN

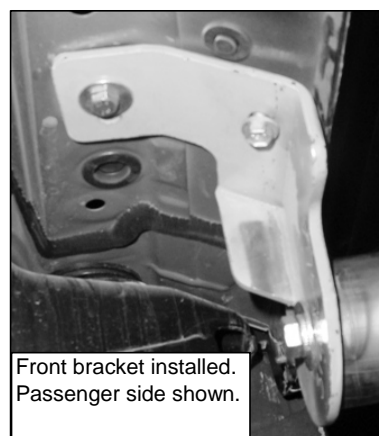


1. Locate existing threaded holes inside the rocker panel at front side of vehicle. Remove existing bolts if necessary. Picture 1.
2. Place front bracket and secure it using (2) M8x30mm hex head bolt, (2) 5/16" flat washer, (2) 5/16" lock washer. Do not tighten yet. Picture 2.

**PICTURE 1**



**PICTURE 2**



#### Cleaning and care instructions:

Design:

Quality:

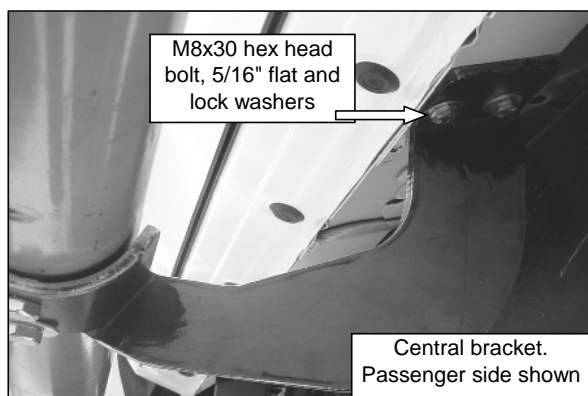
Keep your product clean. Do not use abrasive cleaners or polish. We recommend only non-abrasive automotive wax such as pure carnauba to avoid scratches or rust.

## INSTALLATION INSTRUCTIONS

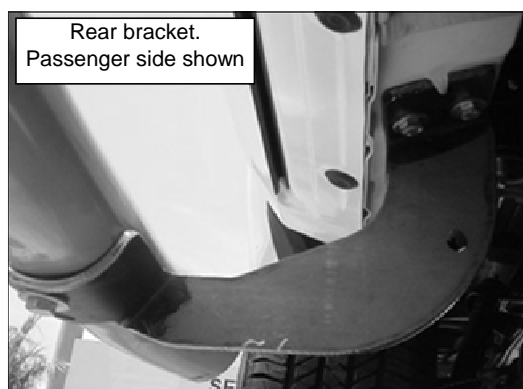
### 61415 SIDE BAR

3. To install central & rear brackets, locate threaded holes inside the vehicle's rocker panel, then remove bolts if necessary. Place central & rear brackets, and secure it using: (2) M8x30mm hex head bolts and (2) 5/16" lock washers and (2) 5/16" flat washers by each bracket. Picture 3 & 4. Do not tighten yet.

PICTURE 3



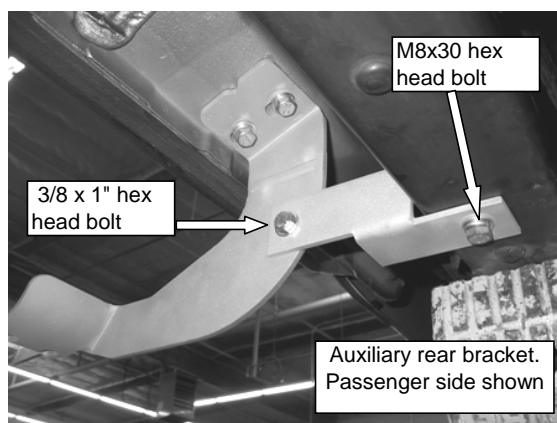
PICTURE 4



4. Attach the rear auxiliary bracket to the bottom of the frame rail using (1) M8 x 30mm hex bolt, (1) 5/16" lock washer, (1) 5/16" flat washer and to the rear bracket using (1) 3/8 x 1" hex bolt, (1) 3/8" lock washer, (1) 3/8" flat washer and (1) 3/8" hex nut. Do not tighten. Picture 5. **Note:** Attach the passenger side rear auxiliary bracket to the bottom of the frame rail using (1) M8 x 30mm hex bolt, (1) 5/16" flat washer, (1) 5/16" lock washer and (1) M8 hex nut.

5. Mount side bar on brackets and secure it using at front: (1) 1/2 x 2" hex head bolt and 1/2" flat and lock washers, for the others brackets use: (2) 3/8" x 1" Hex head bolts, (2) 3/8" lock washers by each bracket. Leave loose.

PICTURE 5



6. Align the Side Bar to the vehicle and tighten all hardware.
7. Repeat all the steps for the other side of vehicle.
8. Fill out the warranty card included and place it inside your vehicle.

**Cleaning and care instructions** Design:

Quality:

Keep your product clean. Do not use abrasive cleaners or polish. We recommend only non-abrasive automotive wax such as pure carnauba to avoid scratches or rust.