

# DOMINATOR II

## DOMINATOR SERIES SIDESTEPS

### ASSEMBLY & INSTALLATION INSTRUCTIONS

PART NO. D24149 01-04 FORD F-150 HERITAGE SUPER CREW

**Do not attempt to install this product on any vehicle other than the one it is designed for and listed above!**

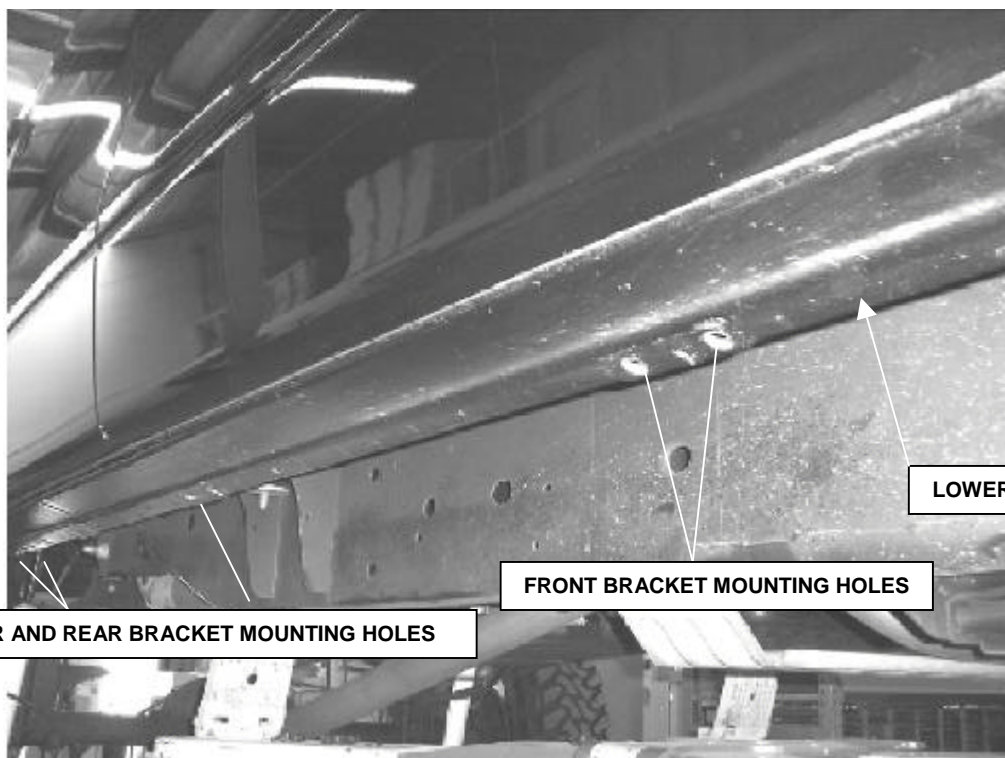
<u>QTY</u>	<u>PARTS DESCRIPTION</u>
48	3/8" FLAT WASHERS
24	3/8" HEX NUTS
24	3/8" x 1 " HEX BOLTS
24	3/8" LOCK WASHERS

<u>QTY</u>	<u>PARTS DESCRIPTION</u>
2	F05 FRONT MOUNTING BRACKETS
4	F06 CENTER AND REAR MOUNTING BRACKETS
1	D24149P PASSENGER SIDESTEP
1	D24149D DRIVER SIDESTEP

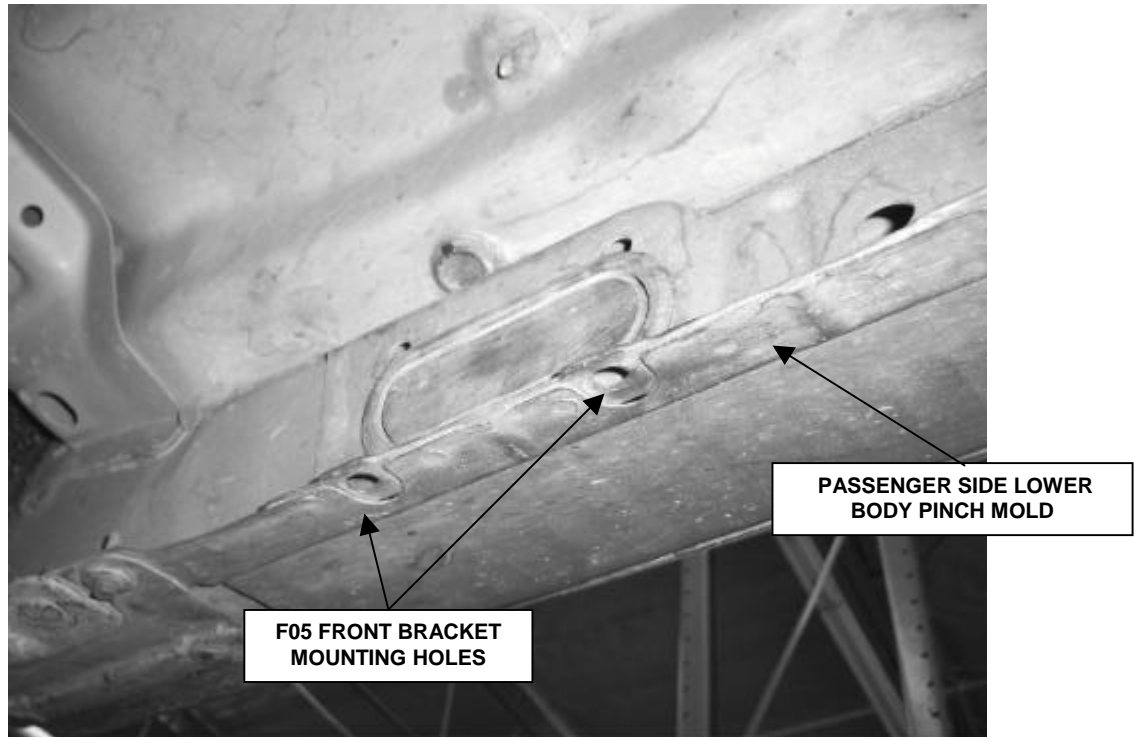
### INSTALLATION INSTRUCTIONS

**STEP 1.** Read the instructions completely before you begin the installation.

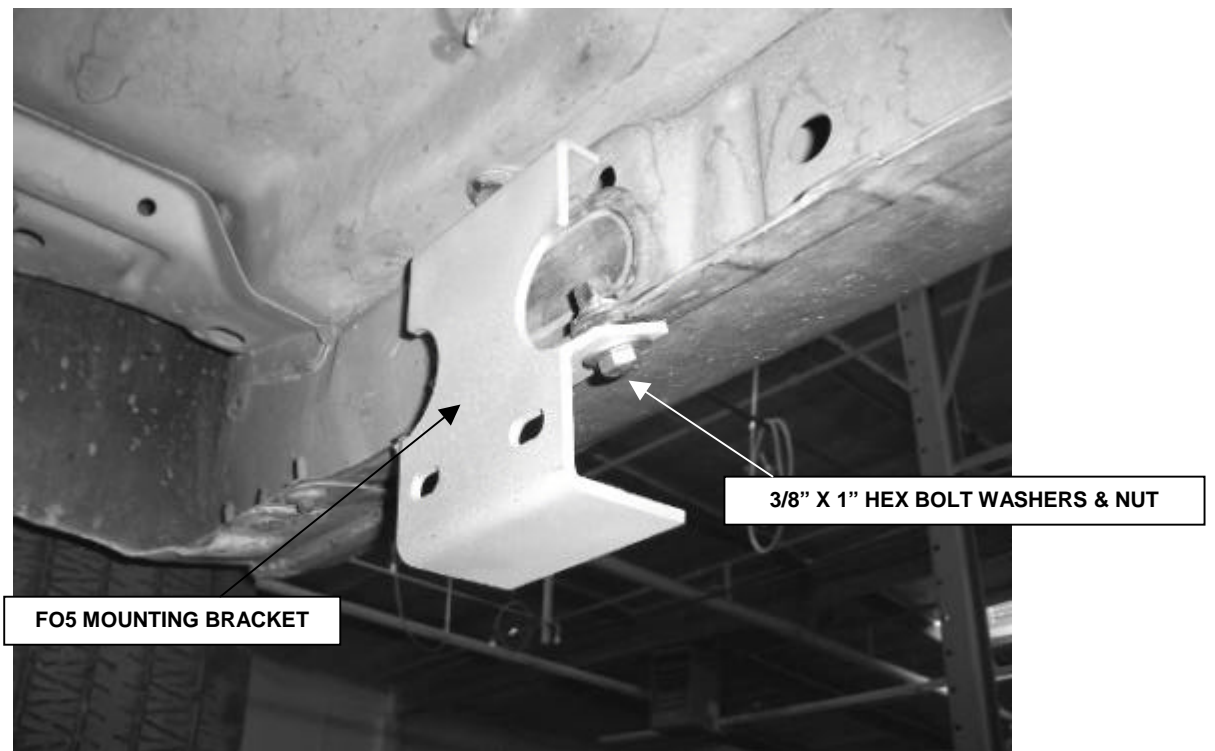
If the vehicle is equipped with factory running boards, remove boards and fasteners.



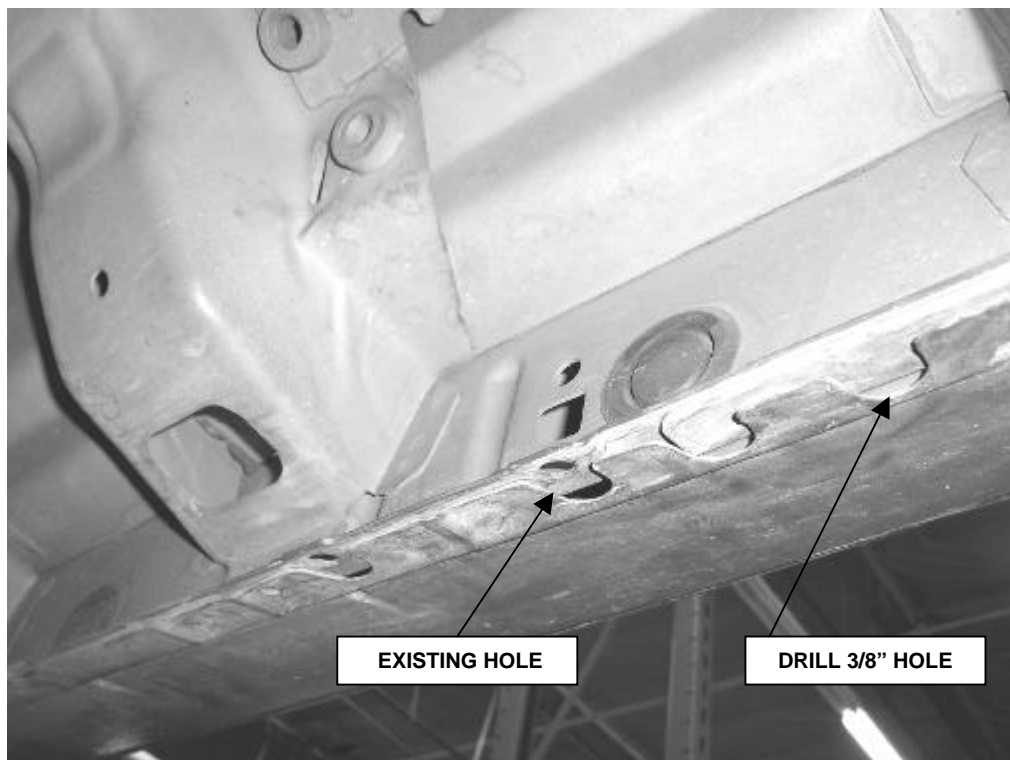
**STEP 2.** This installation uses three mounting brackets per side.



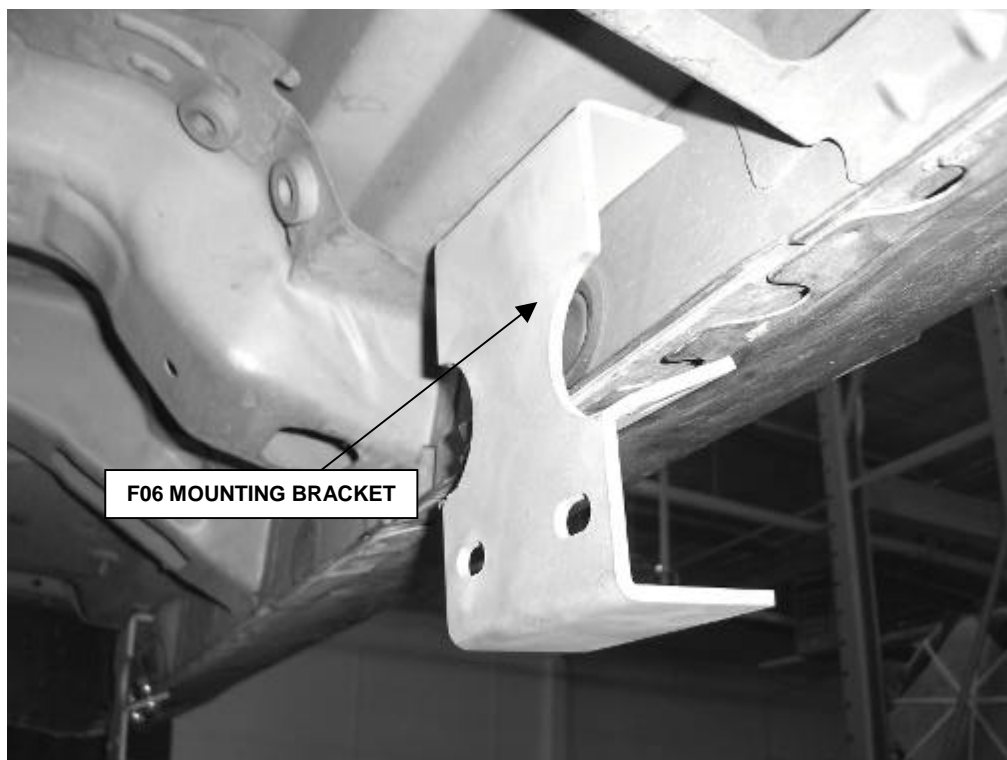
**STEP 3.** Beginning with the passenger side, locate the holes in the lower body pinch mold for the front mounting bracket.



**STEP 4.** Loosely attach the flange of the front mounting bracket to the bottom of the lower body pinch mold using the 3/8" x 1" hex bolts, washers, and nuts as shown.



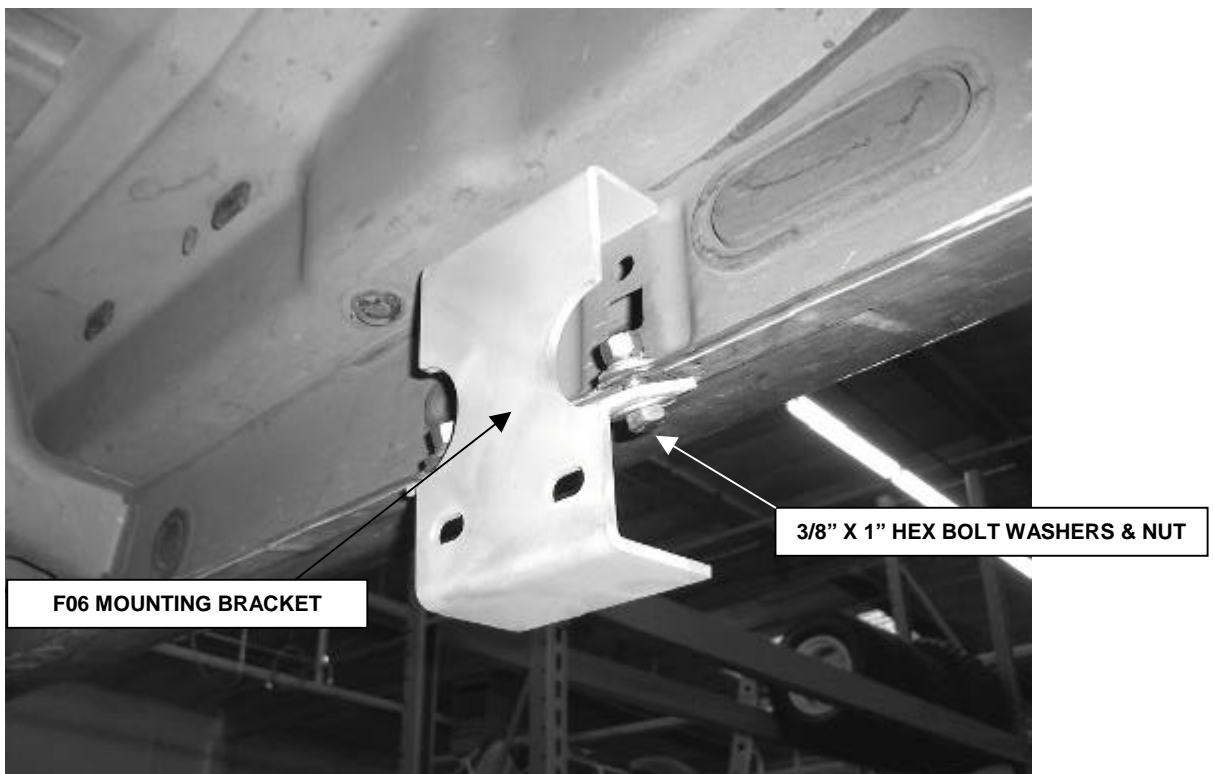
**STEP 5.** Locate the hole in the lower body pinch mold for the center-mounting bracket. The center bracket requires drilling an additional mounting hole. Measure rearward from the center of the existing hole approximately 3 3/4" and drill a 3/8" hole in the body pinch mold hole.



**STEP 6.** Loosely attach the flange of the mounting bracket to the bottom of the lower body pinch mold using the 3/8" x 1" hex bolts, washers, and nuts.

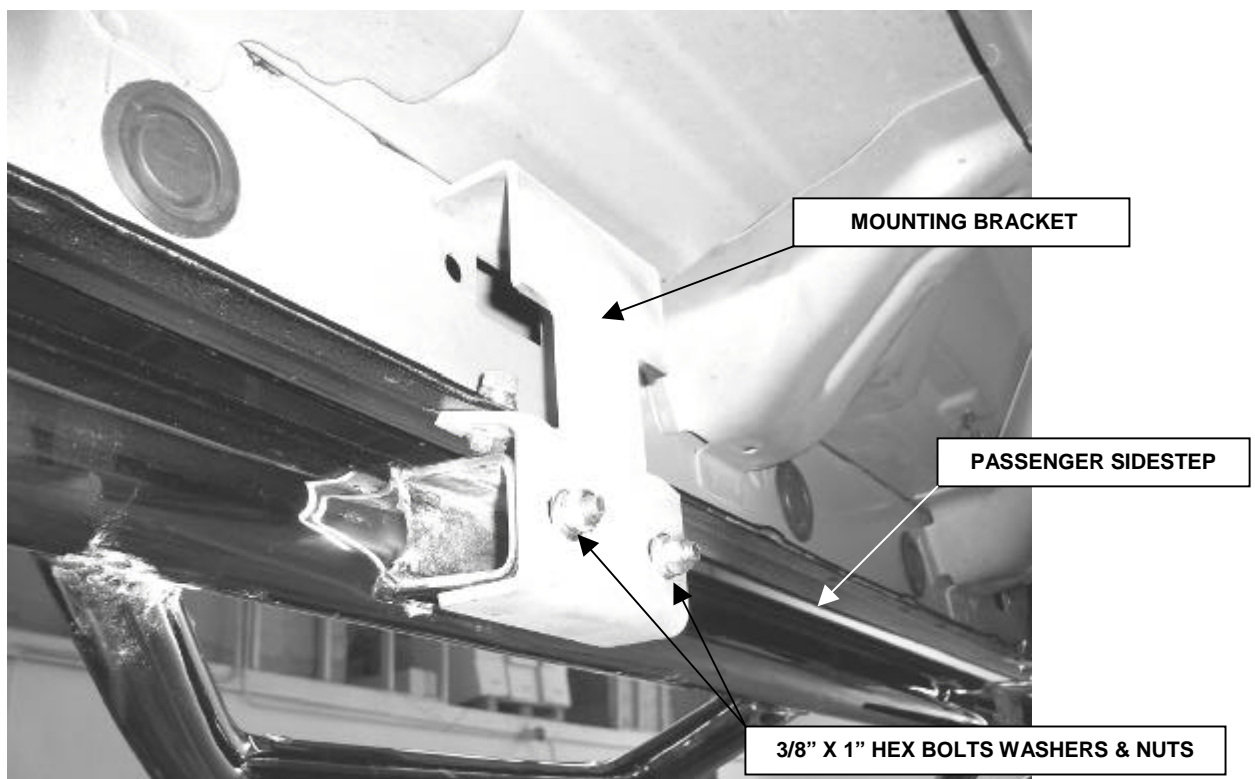
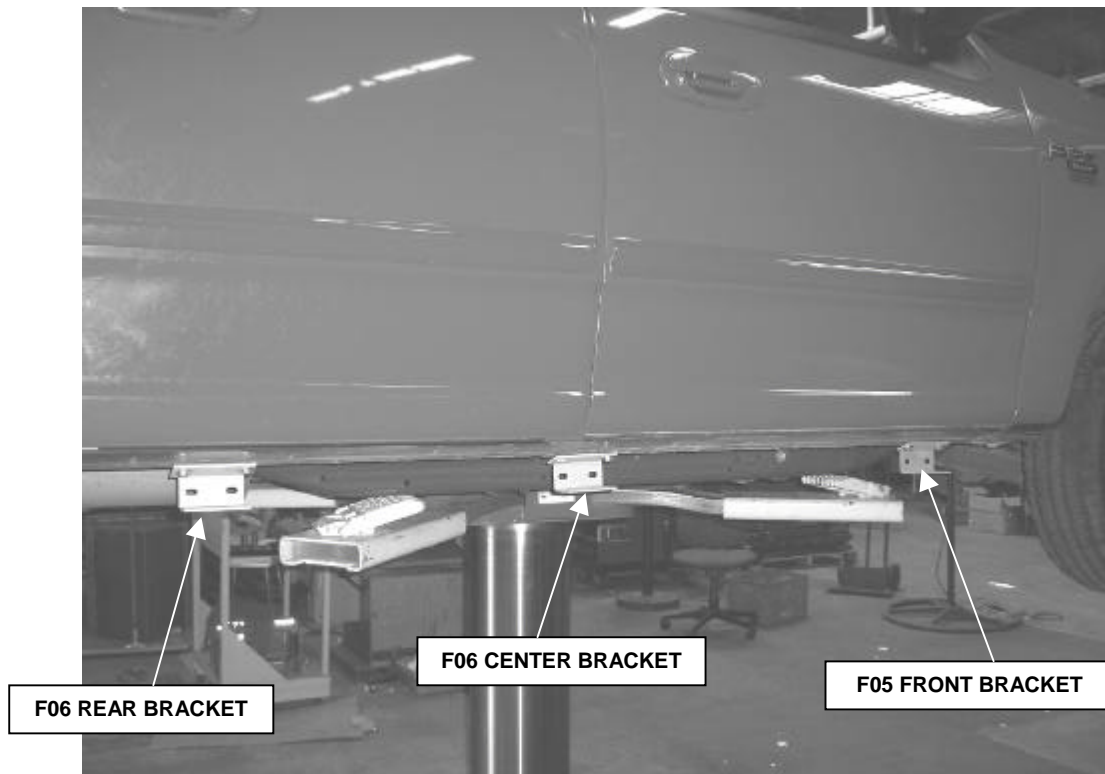


**STEP 7.** Locate the holes in the lower body pinch mold for the rear-mounting bracket.





**STEP 8.** Loosely attach the flange of the mounting bracket to the bottom of the lower body pinch mold using the 3/8" x 1" hex bolts, washers, and nuts.



**STEP 9.** Position the passenger sidestep up to the mounting brackets and loosely attach it to the brackets using the 3/8" x 1" hex bolts, washers and nuts as shown.

**STEP 10.** Align sidestep with the body, and then tighten all mounting bracket and sidestep nuts and bolts.

**STEP 11.** Repeat the above steps to install the driver side mounting brackets and sidestep.