



# DOMINATOR III SideSteps WHEEL-TO-WHEEL

## INSTALLATION INSTRUCTIONS

PART NO. D36249 2009 FORD F-150 SUPER CREW P/U 2/4WD 5.5' BED

Do not attempt to install this product on any vehicle other than the one it is designed for and listed above!

## PACKING LIST

### QTY PART DESCRIPTION

12	3/8" X 1" CARRIAGE BOLTS
12	3/8" X 1 1/4" HEX BOLTS
36	3/8" FLAT WASHERS
24	3/8" LOCK WASHERS
24	3/8" HEX NUTS

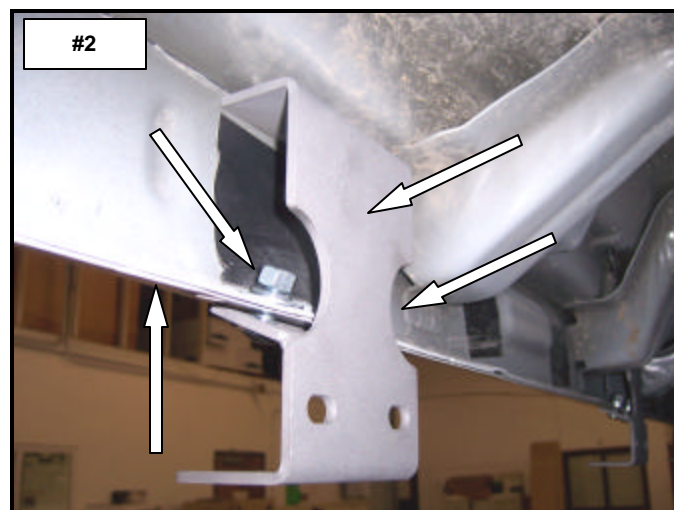
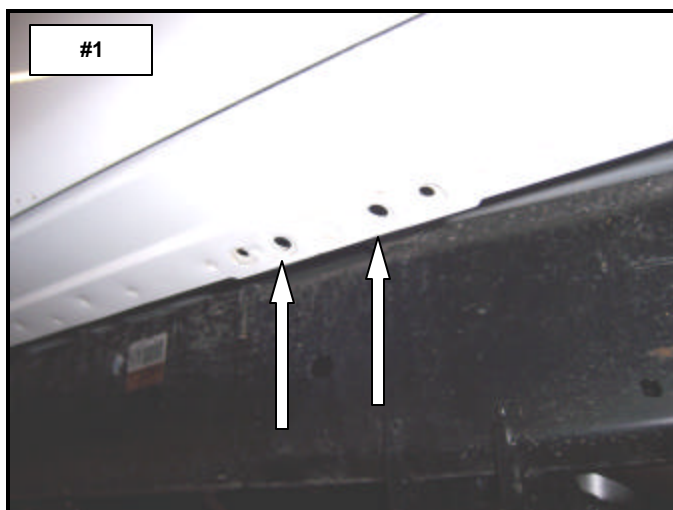
### QTY PART DESCRIPTION

4	F04 FRONT & REAR BRACKETS
2	F07 CENTER BRACKETS
1	349FP PASSENGER FRONT SECTION
1	349RP PASSENGER REAR SECTION
1	349FD DRIVER FRONT SECTION
1	349RD DRIVER REAR SECTION

## INSTALLATION INSTRUCTIONS

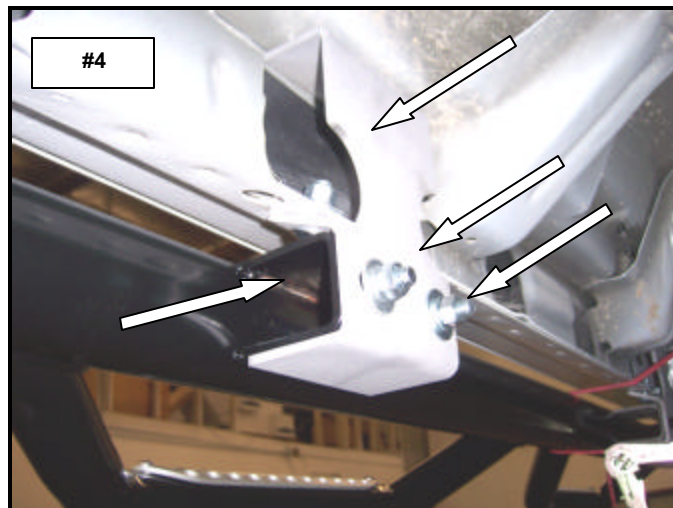
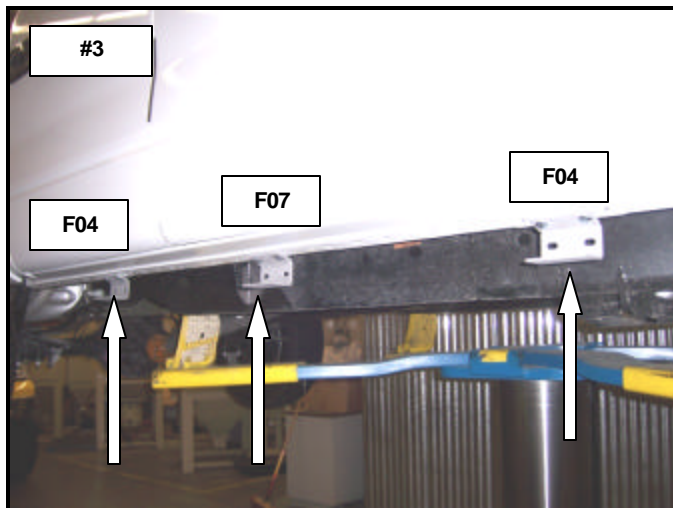
### READ THE INSTRUCTIONS COMPLETELY BEFORE YOU BEGIN THE INSTALLATION

**STEP 1.** THIS INSTALLATION USES (3) MOUNTING BRACKETS PER SIDE. BEGIN BY INSTALLING THE SIDE STEP MOUNTING BRACKETS ON THE PASSENGER SIDE OF THE VEHICLE. LOCATE THE HOLES IN THE BODY PINCH MOLD AT THE FRONT, CENTER AND REAR OF THE CAB. **PHOTO #1**



**STEP 2.** ATTACH EACH OF THE MOUNTING BRACKETS TO THE PINCH MOLD USING (2) 3/8" X 1" CARRIAGE BOLTS, (2) FLAT WASHERS, (2) LOCK WASHER AND (2) HEX NUTS. HAND TIGHTEN. **PHOTO'S #2 & #3**

**STEP 3.** ATTACH THE PASSENGER SIDE STEP TO EACH OF THE MOUNTING BRACKETS USING (2) 3/8" X 1 1/4" HEX BOLTS, (4) FLAT WASHERS, (2) LOCK WASHERS AND (2) HEX NUTS. **PHOTO #4**



**STEP 4.** ALIGN THE SIDE STEP WITH THE VEHICLE AND TIGHTEN ALL MOUNTING BRACKET AND SIDE STEP NUTS AND BOLTS. REPEAT THE ABOVE PROCESS TO INSTALL THE DRIVER SIDE BRACKETS AND SIDE STEP.



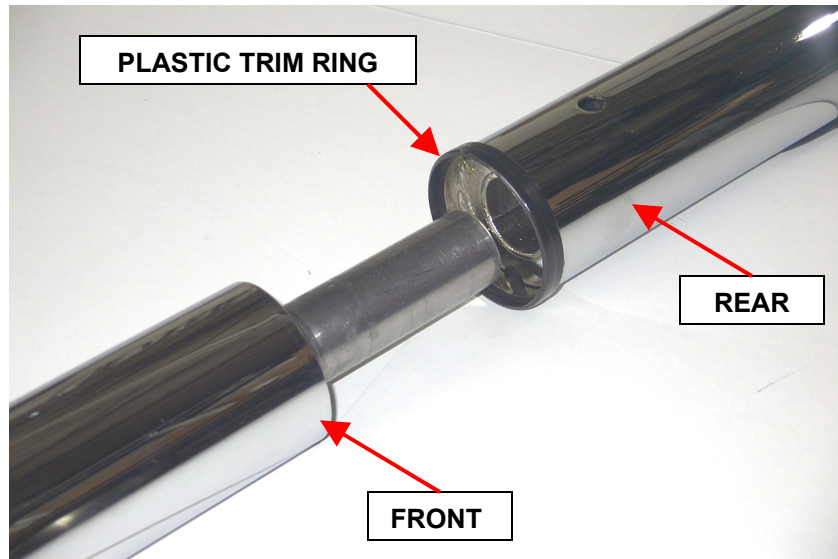
**FOR TECHNICAL OR WARRANTY INFORMATION CALL:  
TOLL FREE (888)427-4466 FAX (714)672-0278  
GO RHINO! Products® 591 W. Apollo St. Brea, CA 92821**

# DOMINATOR SideSteps **WHEEL - TO - WHEEL**

## ASSEMBLY INSTRUCTIONS

QTY	PARTS DESCRIPTION
2	PLASTIC PLUGS
2	3/8" X 3/4" SOCKET SET SCREWS
2	PLASTIC TRIM RINGS

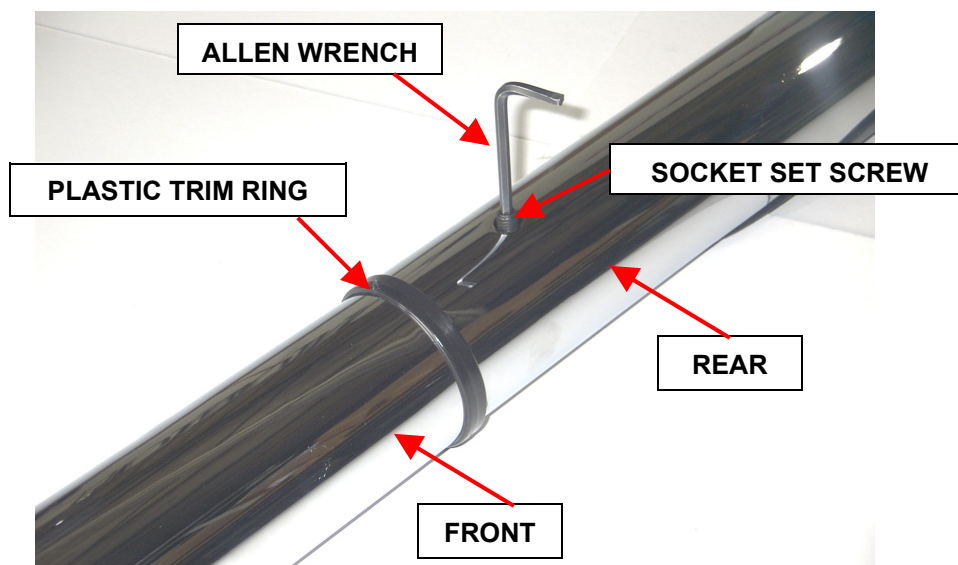
**STEP 1.** BEGIN BY LAYING OUT THE DRIVER SIDE FRONT AND REAR SIDESTEP SECTIONS ON A PROTECTIVE SURFACE WITH THE STEP PAD SIDE DOWN.



**STEP 2.** INSTALL THE PLASTIC TRIM RING ON THE REAR SECTION AND INSERT THE FRONT SECTION INTO THE REAR SECTION.

**STEP 3.** POSITION THE SIDESTEP SECTIONS AGAINST THE PLASTIC TRIM RING.

**STEP 4.** ALIGN THE FRONT AND REAR STEP HOOPS AND SECURE THE ASSEMBLY USING (1) SOCKET SET SCREW.



**STEP 5.** INSTALL THE PLASTIC PLUG TO CONSEAL THE SET SCREW.

REPEAT THE ABOVE STEPS TO ASSEMBLE THE PASSENGER SIDE.

FODI7.003.I