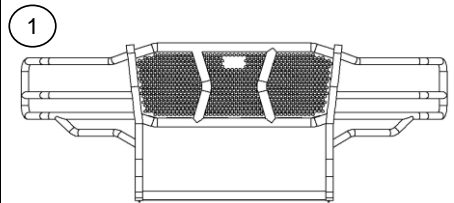
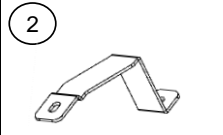
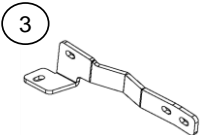


GRILLE GUARD 14169T

INSTALLATION INSTRUCTIONS CHEVROLET SILVERADO 2500HD/3500HD 2011-'12 (Gas & Diesel - 2/4WD)

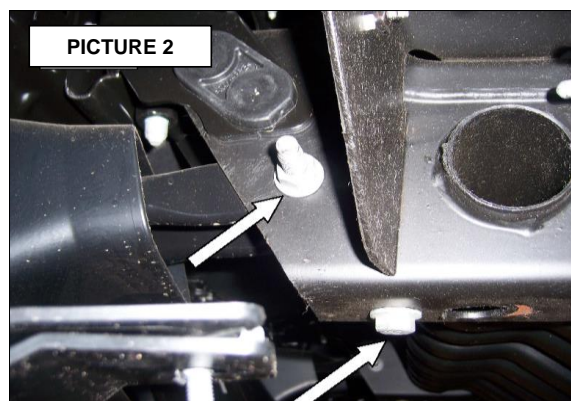
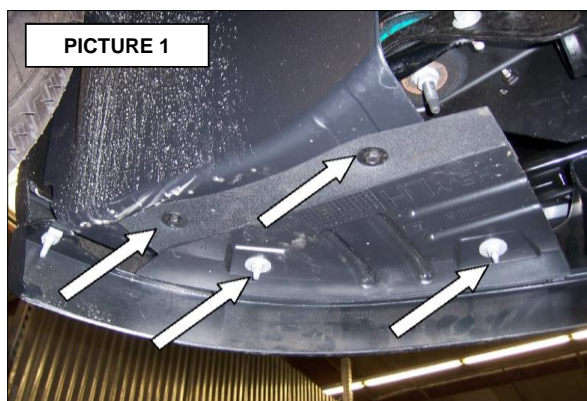
| Parts List | | | | |
|--|--------|-----------|---------------------------------|-------------|
| Item | Qty. | Code | Description | Max. Torque |
| 1 | 1 Pc. | 573790AC | Grille Guard | - |
| 1 Pc. BRK-57479 Bracket kit includes | | | | |
| 2 | 1 Set | 574794AA | Upper bracket | - |
| 3 | 1 Set | 574794BA | Lower bracket | - |
| 1 Pc. KTE-57479 Hardware kit includes | | | | |
| 4 | 2 Pc. | AST-TU71 | 1/2 x 1 1/2" Carriage head bolt | 70 Lb/Ft |
| 5 | 8 Pc. | AST-T367 | 1/2 x 1 1/2" Hex. Head bolt | 70 Lb/Ft |
| 6 | 10 Pc. | AST-RP12 | 1/2" Flat washer | - |
| 7 | 10 Pc. | AST-RPR07 | 1/2" Lock washer | - |
| 8 | 10 Pc. | AST-TU43 | 1/2" Hex nut | 70 Lb/Ft |

| Required Tools (Not included) | |
|---|--|
| Qty. | Description |
| 1 | Ratchet |
| 1 | Extension |
| 1 | Socket / wrench 3/4" |
| 1 | Socket / wrench 18mm |
| 1 | Socket / wrench 15mm |
| 1 | Screw driver flat |
| Brackets | |
|  | |
|  <p>Driver side</p> |  <p>Driver side</p> |

Instructions

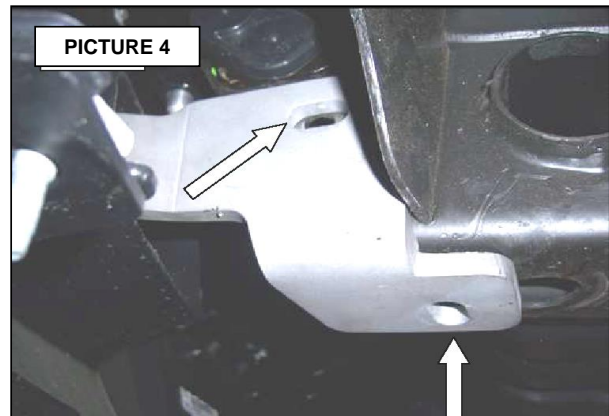
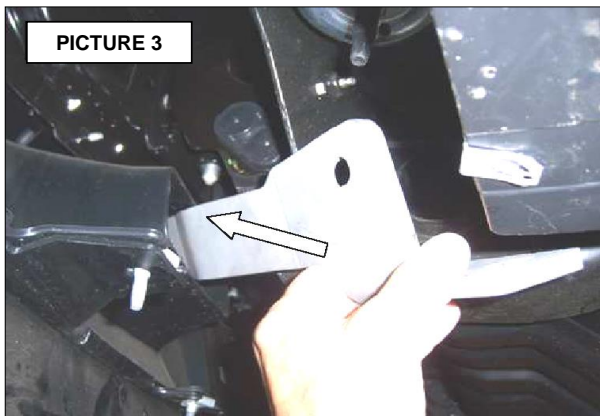
- Before beginning the installation, please read all directions carefully and verify that all necessary hardware is accounted for. If any parts are missing, stop the installation and contact your distributor immediately.
- Beginning with the driver side remove the nuts, bolts and splash shield from the wheel well and lower bumper valance. **See picture 1.**
- Remove the nut, bolts and tow hook from the frame. **See picture 2.**

NOTE: The splash shield and tow hook will be rein stalled.



- From behind the bumper balance, position the driver side lower brackets so the leg of the bracket extends out through the tow hook opening, then rotate and align the bracket with the side and bottom of the frame. **Seer pictures 3 and 4.**

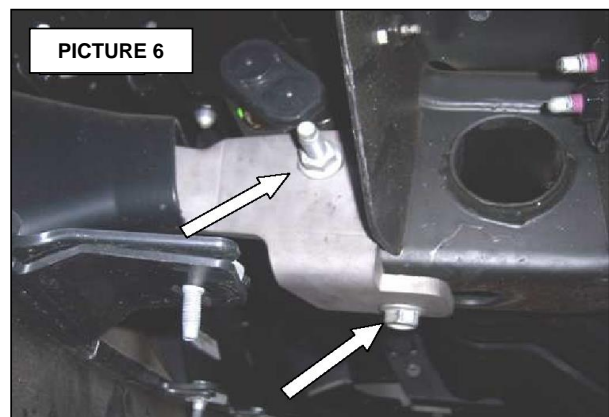
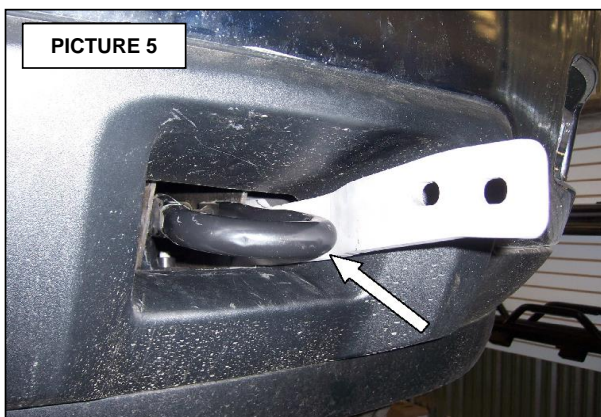
GRILLE GUARD 14169T



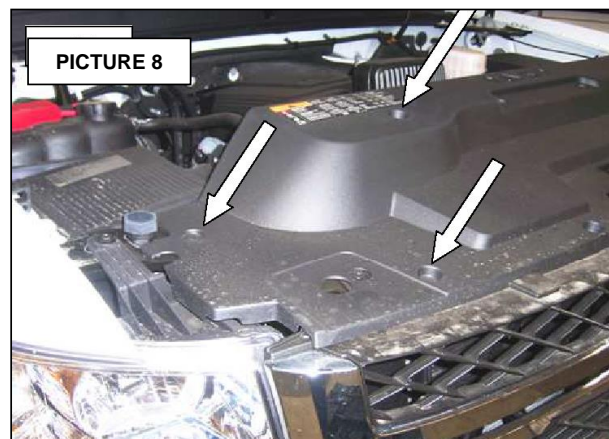
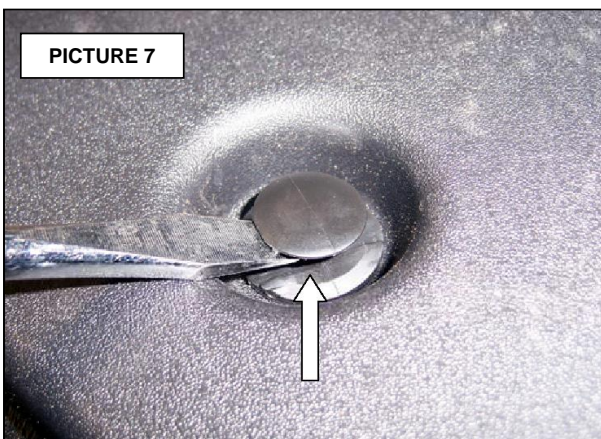
5. Position the tow hook inside the frame, align the bracket and tow hook with the holes in the frame and rein stall the tow hook bolts and nut. Leave the tow hook bolts and nuts loose for final adjustment. **See pictures 5 and 6.**

Repeat the above steps to install the passenger side lower bracket.

NOTE: If your vehicle is not equipped with factory tow hooks, attach the lower brackets to the frame using the 1/2 x 1 1/4" hex bolts, flat washers, lock washers and hex nut supplied.



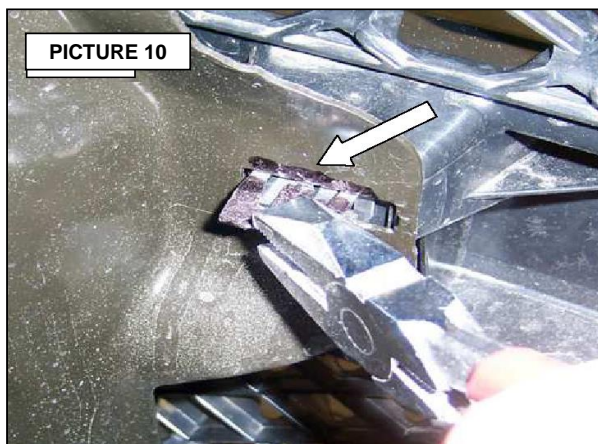
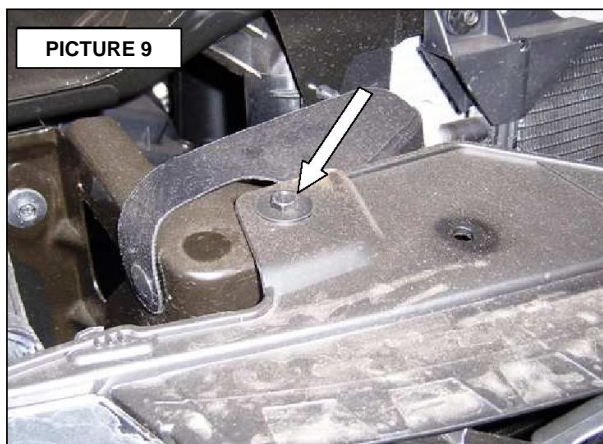
6. Open the hood, locate and remove the plastic rivets and radiator cover. **See pictures 7 and 8.**



7. Remove the screws securing the top of the grille. **Seer picture 9.**

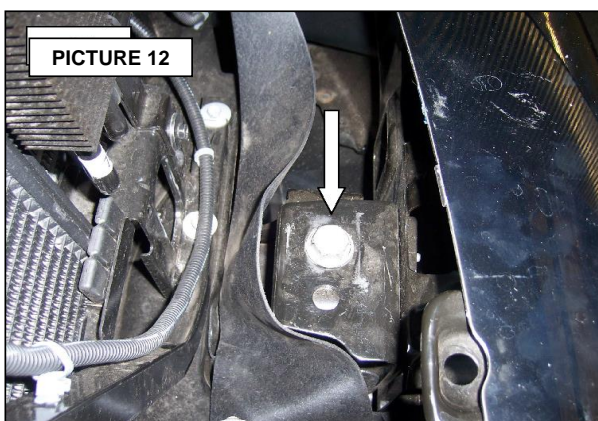
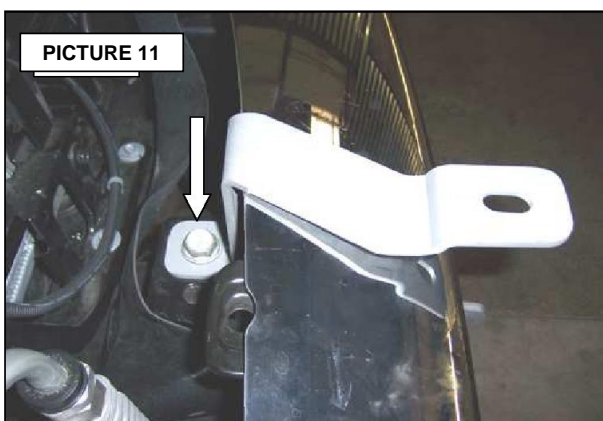
GRILLE GUARD 14169T

8. Working from one side use pliers to squeeze the grille mounting clips and gently pull outward to remove the grille. **See picture 10.**



9. Remove the bumper bracket bolt from the top of the driver side frame rail. Align the driver side upper bracket with the hole in the frame and rein stall the bumper bolt. Leave the bolt loose for final adjustment. **See pictures 11 and 12.**

Repeat the above steps to install the passenger side upper bracket.



10. Attach the Grille Guard FS to the top of the upper brackets using the 1/2 x 1 1/2" carriage bolts, 1/2" flat washers, 1/2" lock washers and 1/2" hex nut and to the outside of the lower brackets using the 1/2 x 1 1/2" hex bolts, 1/2" flat washers, 1/2" lock washers and 1/2" hex nut. Align the Grille Guard FS with the vehicle and tighten all nuts and bolts. **See pictures 13 and 14.**

Remember to check and retighten the hardware periodically.

11. Rein stall all parts before removed of the vehicle.
12. Fill out your warranty card and place it inside your vehicle.

