

Installation Instructions

Rear Bumper Replacement Part #16479T

2011 Chevrolet & GMC 2500HD, 3500HD 4x2/4x4

Do not attempt to install this product on any vehicle other than the one it is designed for and listed above!

Parts List

Item	Qty.	Part #	Description	Torque
1	1		Replacement Bumper Assembly	
2	2		6" Oval Light	
3	2		Light Mounting Grommet	
4	2		3-Wire Harness	
5	2		License Plate Light	
6	4		Reverse Sensor Mounting Grommet	
7	2		3/8" x 1 1/2" Hex Bolt	30 Ft. Lbs.
8	2		3/8" Flat Washer	
9	2		3/8" Flange Nut	30 Ft. Lbs.
10	6		1/2" x 1 1/2" Hex Bolt	65 Ft. Lbs.
11	6		1/2" Flat Washer	
12	6		1/2" Hex Nut	65 ft. Lbs.
13	1		Outlet Plate (use with 4-way trailer plug)	
14	4		Plastic caps	



Tool Required:

9/16", 3/4", 15mm & 21mm Sockets
 9/16" & 3/4" Wrench
 Ratchet & Ratchet Extension
 12V Circuit Tester

Approximate installation time: 60 min

Read the installation instructions completely and verify that all of the parts listed are accounted for. If you have defective, missing or damaged parts or need assistance, please contact Go Rhino Products for fast, friendly customer service at: 1-888-427-4466 or email: warranty@gorhino.com

It is the customer's responsibility to protect the finish with a regular application of a non abrasive polish that is compatible with the products finish.

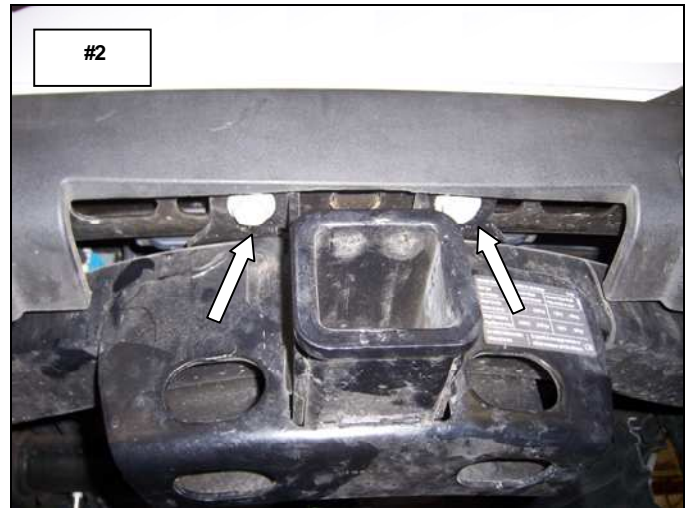
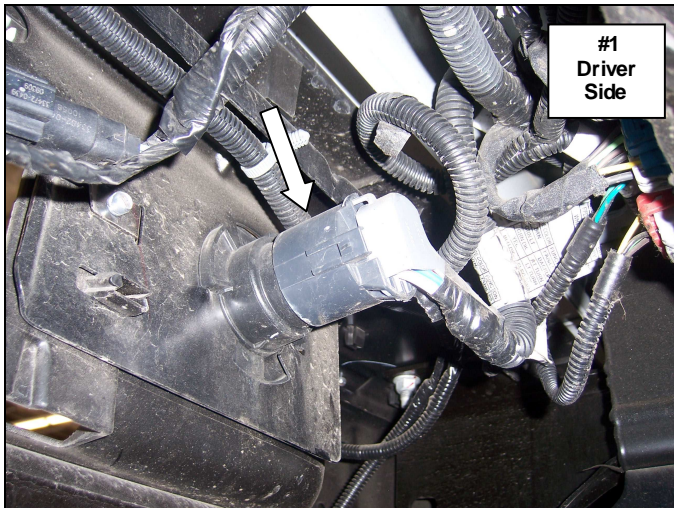
Factory Bumper Removal

Step-1 Lower and remove the spare tire to access the bumper and vehicle wiring.

Step-2 Disconnect the vehicle wiring harness for the trailer plug from the bumper. **Picture #1**

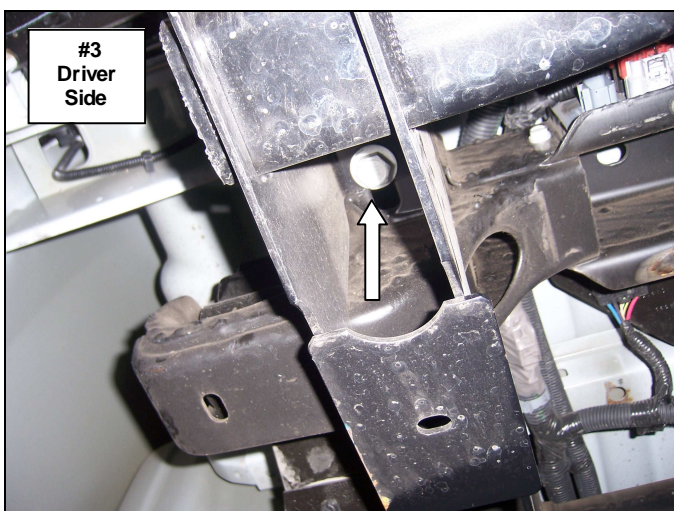
Step-3 Disconnect the bumper wiring harness for the reverse proximity sensors and license plate lights from the vehicle wiring harness.

Step-4 Remove the bolts (1) per side securing the bumper to the center of the receiver hitch using a 21mm socket and ratchet. **Picture #2**



Step-5 Remove the bolts (1) per side securing the bumper brackets and receiver hitch to the bottom of the frame using 21mm socket and ratchet. **Picture #3**

Step-6 Remove the bolts (3) per side securing the bumper brackets to the inside of the frame using a 15mm, 21mm socket, and ratchet. **Picture #4** Remove the bumper by pulling upward and out from the vehicle.

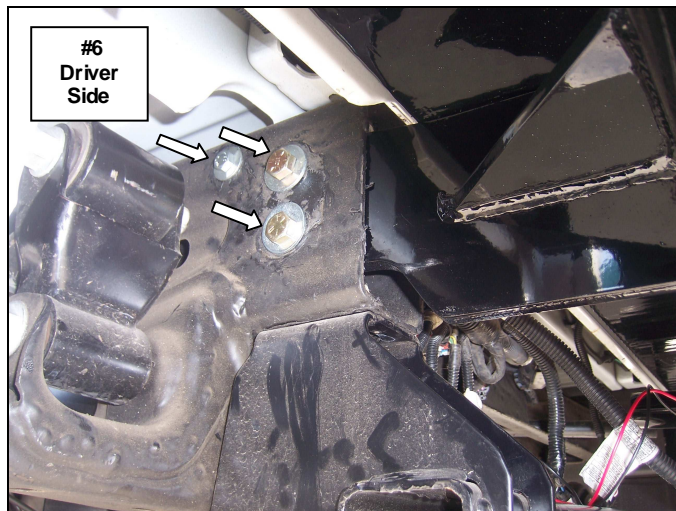
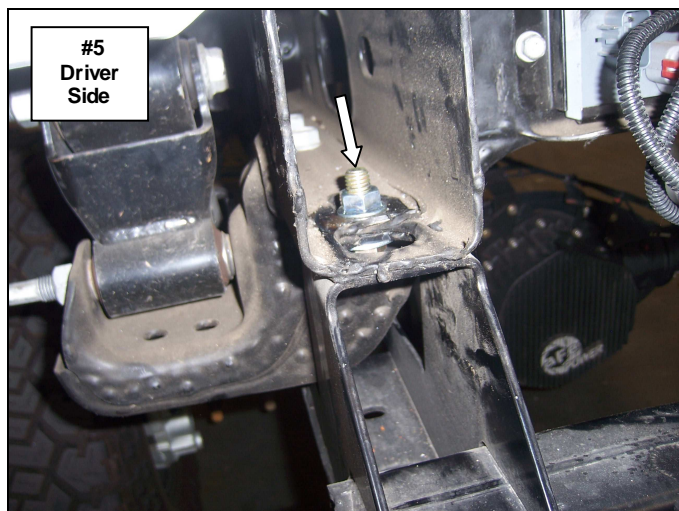


Step-7 If the vehicle is equipped with lighting under the tail gate it must be removed.

Replacement Bumper Installation

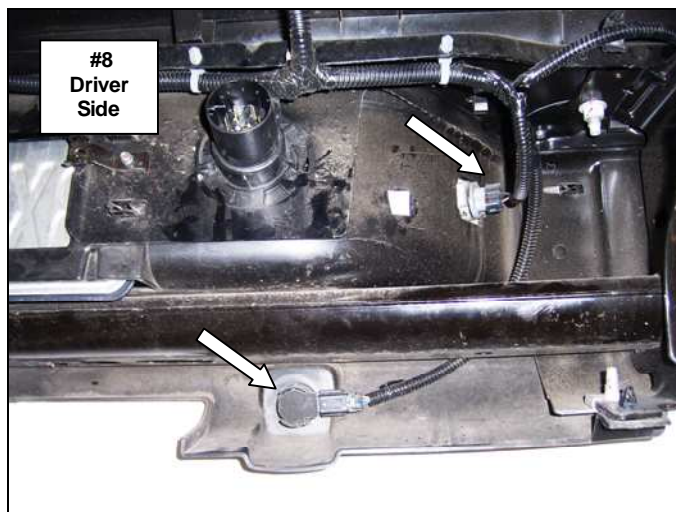
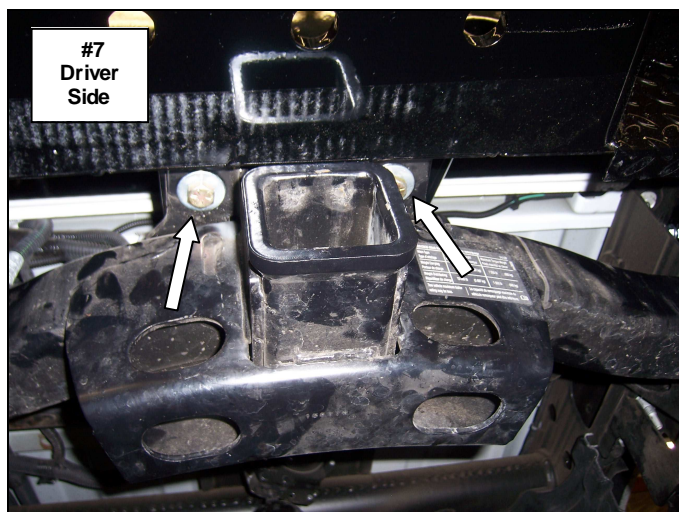
Step-1 Reattach the receiver hitch to the bottom of the frame using (2) ½" hex bolts, (2) ½" flat washers and (2) ½" flange nuts. **Picture #5** Tighten the nuts and bolts.

Step-2 With assistance, lift the replacement bumper up to the frame and position the bumper brackets inside the frame rails. Slide the bumper forward to align the holes and secure each bracket to the frame using (1) 3/8" & (2) 1/2" hex bolts, flat washers and flange nuts. Leave the nuts and bolts loose for final adjustment. **Picture #6**



Step-3 The center of the replacement bumper will sit directly on top of the receiver hitch. Secure the replacement bumper to the receiver hitch using (2) ½" hex bolts, (2) ½" flat washers and (2) ½" flange nuts. Leave the nuts and bolts loose for final adjustment. **Picture #7**

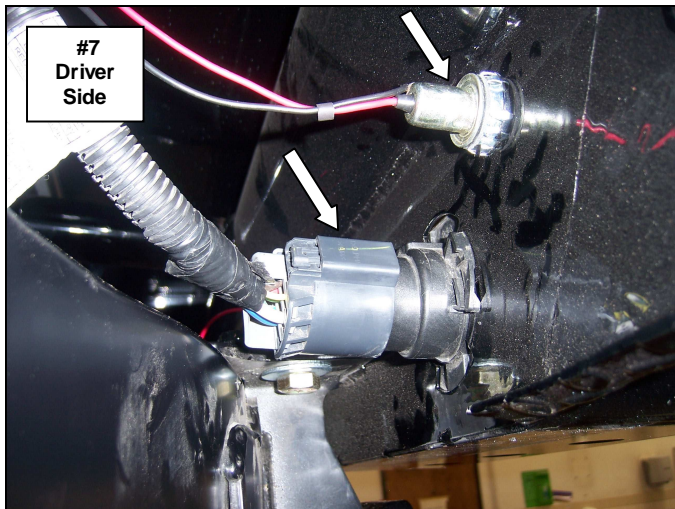
Step-4 Remove the proximity sensors and the wiring harness for the license plate lights and proximity sensors from the factory bumper. **Picture #8** Install the sensors in the replacement bumper using the provided rubber grommets then reconnect the factory bumper wiring harness to the sensors and to the vehicle wiring harness.



Step-5 Remove the trailer plug from the factory bumper, install it to the replacement bumper, and reconnect the wiring harness. **Picture #7**

Step-6 Install the license plate lights in the replacement bumper. **Picture #7** The license plate lights are self-grounding; you will only need to connect a hot wire to each light. Use a circuit tester to find the hot wire from the factory license plate light wiring, and then splice the red wire from the provided lights to the hot wire. **Note:** It may be necessary to scuff the paint around the backside of the holes in the replacement bumper to make a good connection with the light housing.

Step-7 Install the rubber grommets, if your truck has backup sensors or install the plastic caps, if not to cover the holes. Install oval lights in the replacement bumper. Use a tester to find the vehicle tail and stop light wiring then splice the wires from the provided lights to the vehicle wiring. **Picture # 8.**



Step-8 Align the replacement bumper with the vehicle, verify that the tailgate clears when lowered, and tighten all nuts and bolts. If necessary, loosen the nuts and bolts to adjust the bumper. Remember to check and retighten the nuts and bolts periodically.

