

## Installation Instructions

### Rear Bumper Replacement Part # 16579T

### 2015-2016 Chevrolet & GMC 2500HD & 3500HD 2/4WD

Do not attempt to install this product on any vehicle other than the one it is designed for and listed above!

#### Parts List

Item	Qty.	Part #	Description	Torque
1	1		Replacement Bumper Assembly	
2	2		Auxiliary Bracket	
3	2		6" Oval Light	
4	2		Light Mounting Grommet	
5	2		3-Wire Harness	
6	2		License Plate Light	
7	4		Reverse Sensor Mounting Grommet	
8	6		1/2 x 1 1/2" Hex Bolt	65 Ft. Lbs.
9	2		1/2 x 2" Hex Bolt	65 Ft. Lbs.
10	8		1/2" Hex Nut	30 Ft. Lbs.
11	14		1/2" Flat Washer	
12	8		1/2" Lock Washer	



#### **Tool Required:**

13mm, 15mm, 18mm, 21mm, & 3/4" Sockets  
 13mm, 15mm, 18mm, 21mm, & 3/4" Wrenches  
 Ratchet, Ratchet Extensions  
 12V Circuit Tester

**Approximate installation time: 60 min**

Read the installation instructions completely and verify that all of the parts listed are accounted for. If you have defective, missing or damaged parts or need assistance, please contact Go Rhino Products for fast, friendly customer service at: 1-888-427-4466 or email: [warranty@gorhino.com](mailto:warranty@gorhino.com)

It is the customer's responsibility to protect the finish with a regular application of a non abrasive polish that is compatible with the products finish.

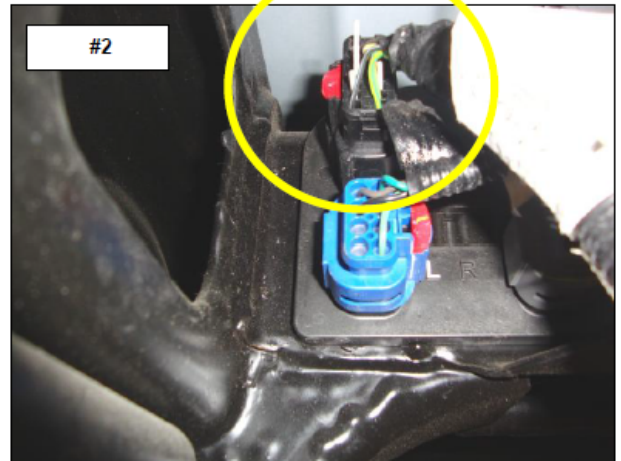
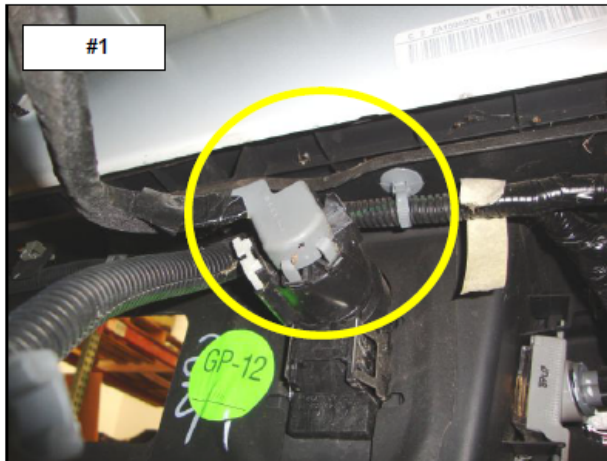
## Factory Bumper Removal

**Step-1** Lower and remove the spare tire to access the factory bumper attachment bolts and vehicle wiring.

**Step-2** Disconnect the vehicle battery or batteries.

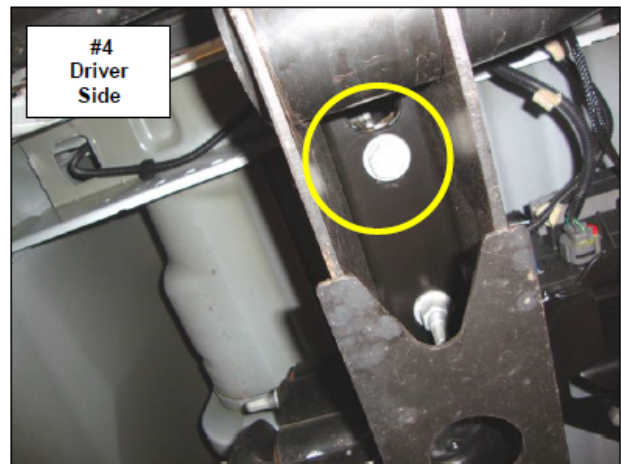
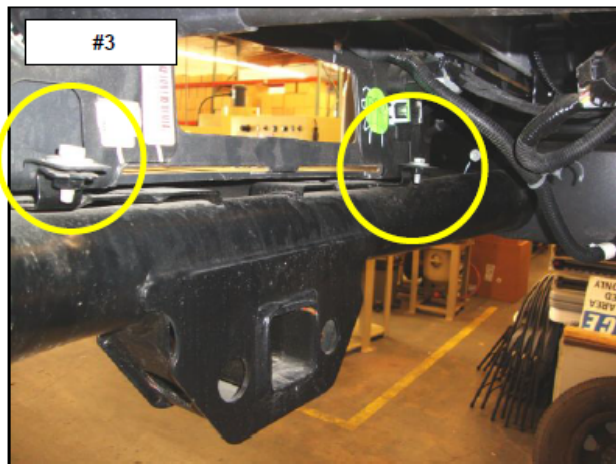
**Step-3** Disconnect the trailer plug wiring harness from the factory bumper, (Photo 1).

**Step-4** Disconnect the bumper wiring harness from the vehicle, (Photo 2).



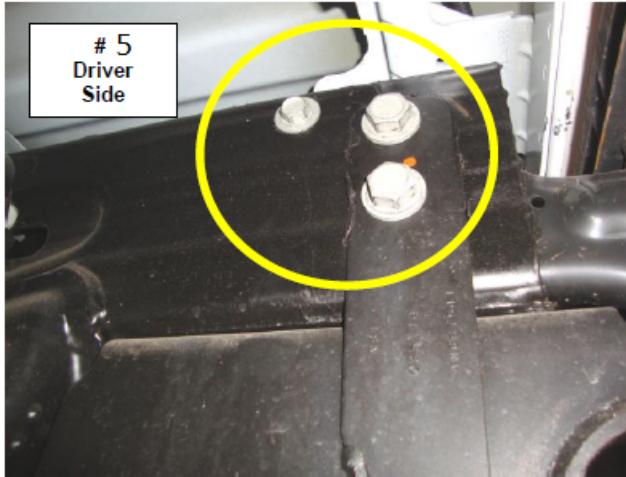
**Step-5** Remove the M8 bolts (1) per side securing the factory bumper to the receiver hitch, (Photo 3).

**Step-6** Remove the M14 bolts (1) per side securing the receiver hitch and factory bumper bracket to the bottom of the frame, (Photo 4).



**Step-7** Remove the M10 bolt (1) per side and M14 bolts (2) per side securing the bumper brackets to the frame, (Photo 5).

**Step-8** With assistance, remove the factory bumper and brackets by slightly lifting the bed off the frame, and pulling the bumper rearward away from the vehicle, (Photo 6). Tighten the bolts securing the bed



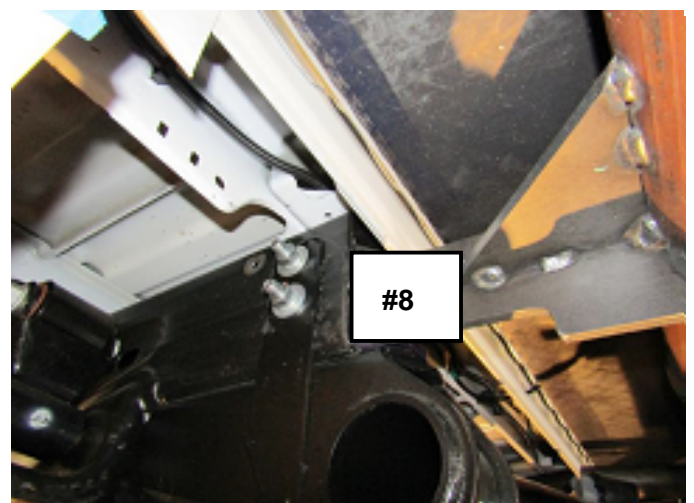
**Step- 9** Remove the license plate, disconnect the license plate lights, and If equipped disconnect the backup sensors from the factory bumper wiring harness.

**Step- 10** Remove the wiring harness from the factory bumper.

### Replacement Bumper Installation

**Step- 1** Attach the Auxiliary Brackets to the main bracket in the bumper replacement using (2) 1/2 " x 2" Hex Bolt, (2) 1/2" flat washers, (2) lock washers and (2) hex nuts. **Picture #7.** Tighten the nuts and bolts.

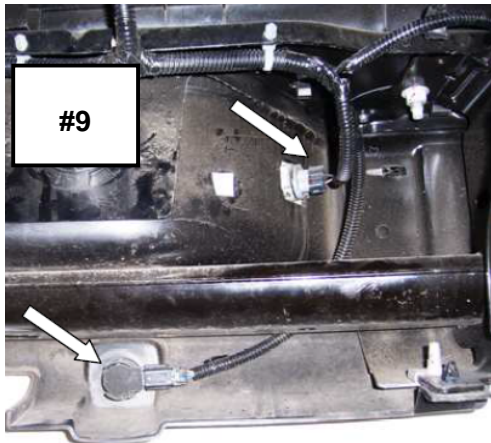
**Step- 2** With assistance, lift the replacement bumper up to the frame and position the bumper brackets inside the frame rails. Slide the bumper forward to align the holes and secure each bracket to the frame using (3) 1/2" x 1 1/2" hex bolt, (6) 1/2" flat washers, (3) lock washers and (3) hex nuts. Leave the nuts and bolts loose for final adjustments. **Picture #8.**





**Step 3-** Remove the proximity sensors and the wiring harness for the license plate lights and proximity sensors from the factory bumper. **Picture #9** Install the sensors in the replacement bumper using the provided rubber grommets then reconnect the factory bumper wiring harness to the sensors and to the vehicle wiring harness.

**Step 4-** Remove the trailer plug from the factory bumper, install it to the replacement bumper, and reconnect the wiring harness. **Picture #10**



**Step 5-** Install the license plate lights in the replacement bumper. The license plate lights are self-grounding; you will only need to connect a hot wire to each light. Use a circuit tester to find the hot wire from the factory license plate light wiring, and then splice the red wire from the provided lights to the hot wire. Note: It may be necessary to scuff the paint around the backside of the holes in the replacement bumper to make a good connection with the light housing.

**Step 6-** Install the rubber grommets and oval lights in the replacement bumper. Use a circuit tester to find the vehicle tail and stop light wiring then splice the wires from the provided lights to the vehicle wiring.



**Step 7-** Align the replacement bumper with the vehicle, verify that the tailgate clears when lowered, and tighten all nuts and bolts. If necessary, loosen the nuts and bolts to adjust the bumper. Remember to check and retighten the nuts and bolts periodically.