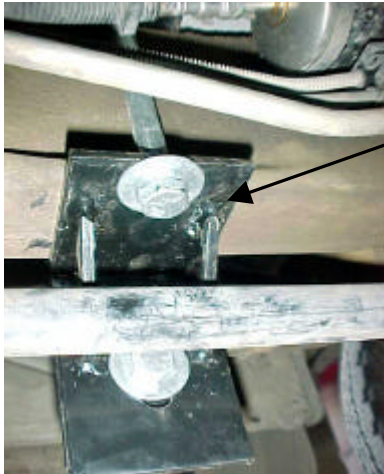




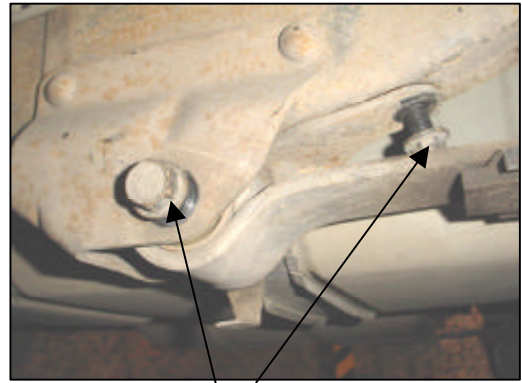
**INSTALLATION INSTRUCTIONS**  
**37066 SIDE BAR**  
**FORD EXPLORER 4 DR, MERCURY MOUNTAINER 99 - 01**

**Picture 2**



Front bracket complement, driver side, frame interior view.

**Foto 3**



**Important:** Just untighten a little these bolts in order to fix the rear bracket, driver side.

**Picture 4**



Rear bracket installed, driver side.

**Picture 5**



Front bracket installed, driver side.

**Picture 6**



**Cleaning and care instructions:**

Protect the finish with a non-abrasive automotive wax, (e.g. Pure Carnauba) on a regular basis. The use of any soap, polish, or wax that contains an abrasive is detrimental to the finish, as the compounds scratch the finish and cause corrosion.

Diseño:

Calidad: