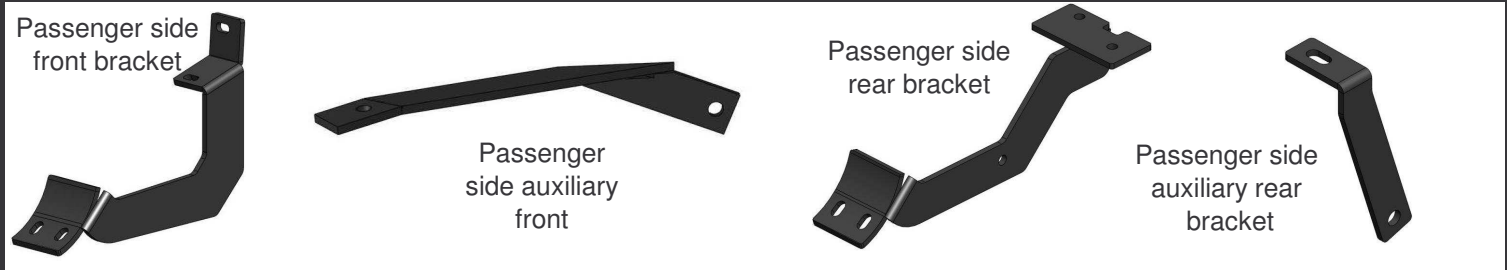


INSTALLATION INSTRUCTIONS

37295 (1 - 3 - 4) SIDE BAR

2009 HONDA PILOT

Parts list:	(1) 37295 Hardware kit includes:
QTY	(12) 3/8" x 1 1/4" Hex head bolt.
(1) Side bar set	(17) 3/8" Flat washer
(1) Front brackets set	(17) 3/8" Lock washer
(1) Auxiliary front brackets set	(9) 3/8" Hex nut
(1) Rear brackets set	(4) M8 x 30mm Hex head bolt
(1) Auxiliary rear brackets set	(7) 5/16" Flat washer
(5) 3/8" Bolt plate	(7) 5/16" Lock washer
(3) 5/16" Bolt plate	(3) 5/16" Hex nut



Required tools

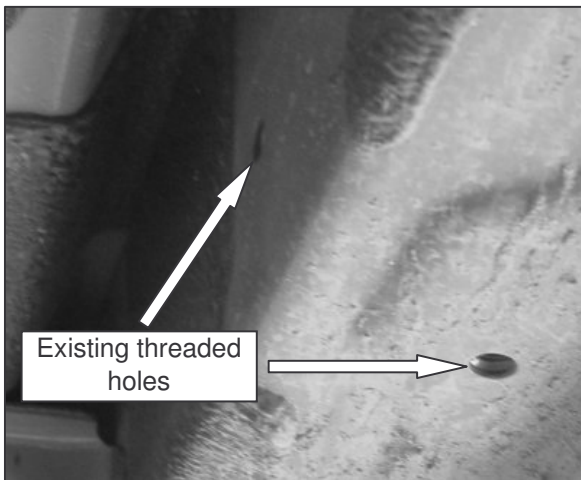
1/2" Socket/wrench	13 mm Socket/wrenc	Ratchet Extension
9/16" Socket/wrench	Ratchet	

Instructions:

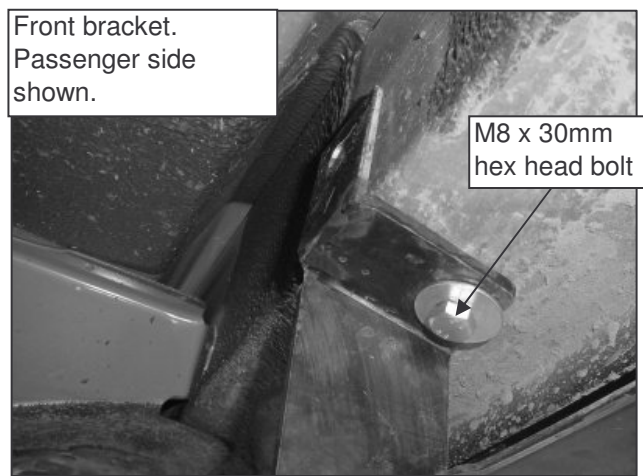
Aprox. Installation time: 35 min.

1. Read carefully and understand instructions before beginning installation. If any part is missed, please stop installation and call to your distributor to get the missing pieces. Sidebar set is compound for driver and passenger side, the farthest step pad to the bending leg goes to front.
2. Locate existing threaded holes inside the rocker panel at front side of vehicle. Picture 1. Place front bracket and secure it using (2) M8x30mm hex head bolt, (2) 5/16" flat washer, (2) 5/16" lock washer. Do not tighten yet. Picture 2.
3. Locate existing hole in the chassis member then introduce (1) 3/8" bolt plate (only passenger side) place front auxiliary bracket and secure using respective hardware. Secure the other end to rear bracket using (1) 3/8" bolt and respective hardware. Leave loose. Picture 3. **NOTE:** At driver's side introduce into the chassis member (1) 5/16" bolt plate to secure front auxiliary bracket.

PICTURE 1



PICTURE 2



Clean and care instructions:

Keep your product clean. Do not use abrasive cleaners or polish. We recommend only non-abrasive automotive wax such as pure carnauba.

Design:

Quality:

INSTALLATION INSTRUCTIONS

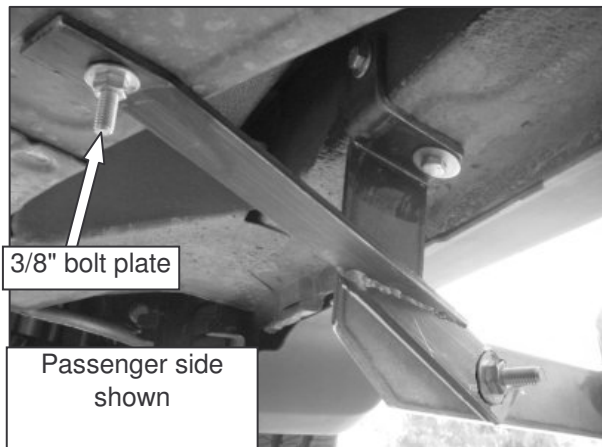
37295 (1 - 3 - 4) SIDE BAR

2009 HONDA PILOT

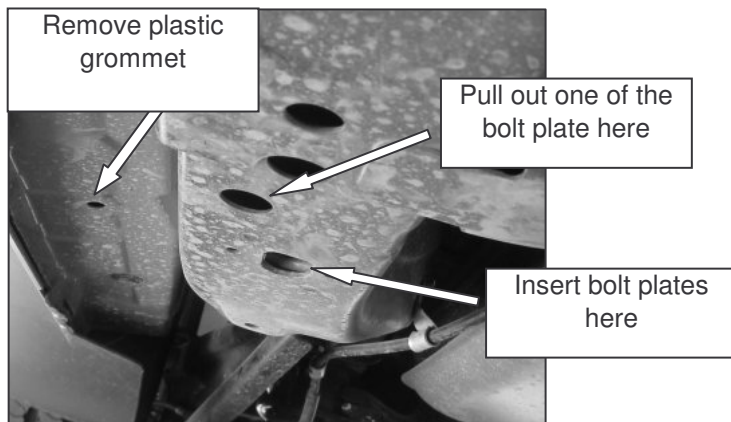
4. To install rear bracket, locate existing holes at chassis frame. Introduce 3/8" bolt plate into the biggest one and push it out in the next existing hole, place another 3/8" bolt plate into the biggest hole and let it there. Place rear bracket and secure it using: (2) 3/8" flat and lock washers and (2) 3/8" hex nut. Picture 4 & 5. Do not tighten yet.

5. Remove plastic grommet from rocker panel then introduce a 5/16" bolt plate secure auxiliary rear bracket using (1) 5/16" flat and lock washers and (1) 5/16" hex nut. Attach the other end to the rear bracket using (1) 3/8 x 1 1/4" hex head bolt, (1) 3/8" flat and lock washers and (1) 3/8" hex nut. Leave loose.

PICTURE 3



PICTURE 4



6. Mount side bar on brackets and secure it using: (2) 3/8" x 1 1/4" Hex head bolts, (2) 3/8" flat and lock washers by each bracket. Leave loose.

7. Adjust and align the side bar, then tighten all bolts.

8. Repeat all steps for the other side of vehicle. Pay attention to step 3 to identify which bolt plate corresponds driver and passenger side to secure front auxiliary bracket.

9. Remember to check periodically your product. Maybe it will need a bolt re.tighten.

10. Fill out warranty card and place it on your vehicle's glove box.

PICTURE 5



Clean and care instructions:

Keep your product clean. Do not use abrasive cleaners or polish. We recommend only non-abrasive automotive wax such as pure carnauba.

Design:

Quality: