

INSTALLATION INSTRUCTIONS **37233 (1 - 3 - 4 - 6 - 8 - 9) SIDE BAR** **2009 FORD F-150 & LOBO REGULAR CAB**

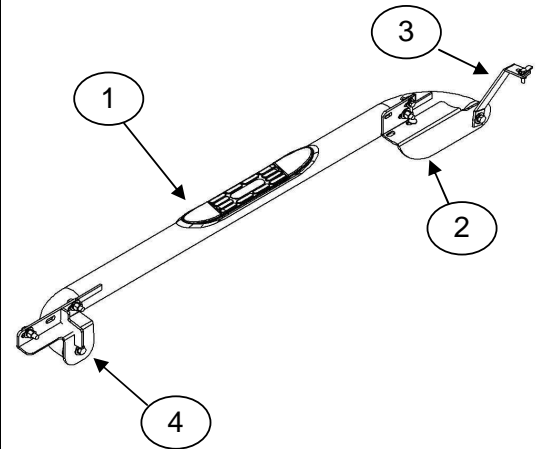
Parts List:

ITEM	QTY	DESCRIPTION	TORQUE MAX.
1	1	Side Bar Set	-
	1	BRK-37233 Brackets kit includes:	-
2	1	Front mounting brackets set	-
3	1	Front auxiliary mounting brackets set	-
4	1	Rear mounting brackets set	-
5	2	5/16" Bolt Plate	11 Lb.Ft
6	4	1/2" Bolt Plate	75 Lb.Ft
7	1	KTE-37233 Hardware kit includes:	
8	6	1/2 x 2" Hex head bolt zinc plated	75 Lb.Ft
9	12	1/2" Flat washer zinc plated	-
10	10	1/2" Lock washer zinc plated	-
11	6	1/2" hex nut zinc plated	75 Lb.Ft
12	2	5/16" flat washer zinc plated	-
13	2	5/16" lock washer zinc plated	-
14	2	5/16" hex nut zinc plated	11 Lb.Ft
15	2	3/8 x 1 1/4" carriage head bolt black plated	30 Lb.Ft
16	2	3/8 x 1 1/4" hex head bolt black plated	30 Lb.Ft
17	4	3/8" lock washer black plated	-
18	4	3/8" flat washer black plated	-
19	2	3/8" hex nut black plated	30 Lb.Ft
20	2	3/8" clip nut	30 Lb.Ft

Required Tools (no included)

DESCRIPTION	QTY
9/16" Socket / wrench	1
3/4" Socket / wrench	1
1/2" Socket / wrench	1
Ratchet	1
Ratchet extension	1

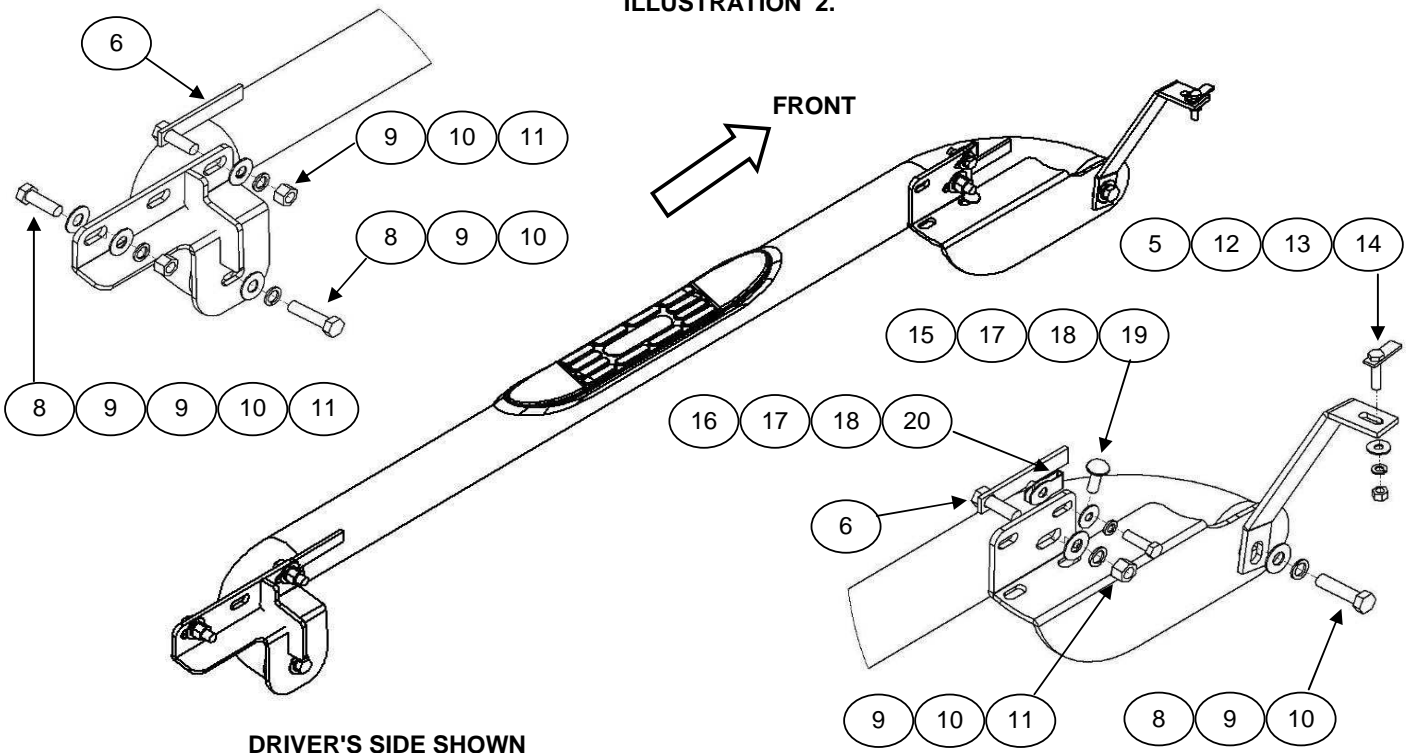
ILLUSTRATION 1.



Instructions:

Approximate installation time: 40 min.

ILLUSTRATION 2.



Cleaning and care instructions:

Design:

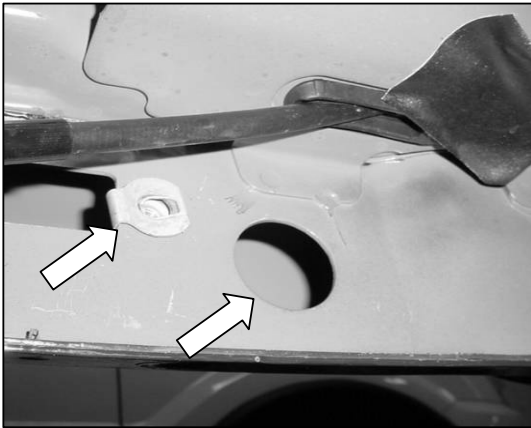
Quality:

Keep your product clean. Do not use abrasive cleaners or polish. We recommend only non-abrasive automotive wax such as pure carnauba to avoid scratches or rust.

INSTALLATION INSTRUCTIONS
37233 (1 - 3 - 4 - 6 - 8 - 9) SIDE BAR
2009 FORD F-150 & LOBO REGULAR CAB

1. Before beginning the installation, please read all directions carefully and verify that all necessary hardware is accounted for. If any parts are missing, stop the installation and contact your distributor immediately.
2. To install front mounting bracket locate in the rocker panel the tape covering the OE holes and remove it. Insert into the exposed round hole (1) 1/2" bolt plate, and place in the square hole (1) 3/8" clip nut. **See picture 1.**
 - a).- Secure front mounting bracket to the placed 1/2" bolt and 3/8" clip nut using corresponding hardware. Leave loose. **See Illustration 2.**
 - b).- Secure front mounting bracket's face towards the floor using (1) 3/8 x 1 1/4" carriage head bolt with corresponding provided hardware.
Leave loose. **See Illustration 2.**
3. To install front auxiliary mounting bracket locate and remove the cover tape behind the front mud guard and insert into the square hole (1) steel bar with 5/16" bolt. **See Picture 2.**
 - a).- Place front auxiliary mounting bracket and secure using corresponding hardware. Leave loose. **See Illustration 2.**

PICTURE 1



Insert into round hole a steel bar with 1/2" bolt and place in the square hole a 3/8" clip nut as shown.
Front driver's side picture.

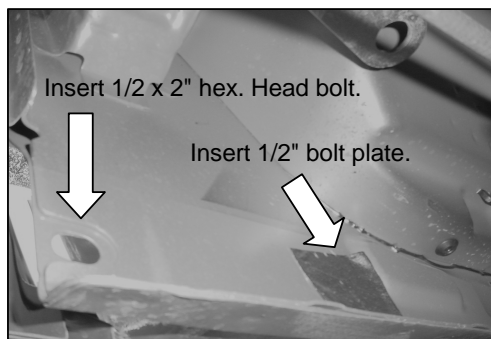
PICTURE 2



Insert into the square hole steel bar with 5/16" bolt.
Front driver's side picture.

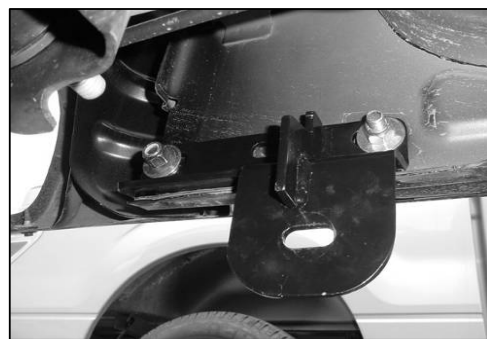
4. To install rear mounting bracket, locate and remove at the rocker panel the cover tape and insert into the largest round hole (1) 1/2" bolt plate and place into the small round hole (1) 1/2 x 2" hex head bolt. **See picture 3.**
 - a).- Secure rear mounting bracket to the placed bolts using corresponding hardware. Leave loose. **See Illustration 2.**

PICTURE 3



Insert into the largest round hole a 1/2" bolt plate and place into the small round hole shown a 1/2 x 2" hex head bolt

PICTURE 4



Rear mounting bracket placed.
Rear driver's side shown.

Cleaning and care instructions:

Design:

Quality:

Keep your product clean. Do not use abrasive cleaners or polish. We recommend only non-abrasive automotive wax such as pure carnauba to avoid scratches or rust.

INSTALLATION INSTRUCTIONS
37233 (1 - 3 - 4 - 6 - 8 - 9) SIDE BAR
2009 FORD F-150 & LOBO REGULAR CAB

5. Place side bar to the front/rear mounting brackets and secure using (1) 1/2 x 2" hex head bolt, and (1) 1/2" flat and lock washers.
NOTE: Using same 1/2" bolt at front secure main mounting bracket and auxiliary mounting bracket . Leave loose. **See Illustration 2.**
6. Align the sidebar to the vehicle and tighten all hardware.
7. Repeat for the other side of vehicle.
8. Fill out the warranty card included and place it inside your vehicle.

PICTURE 5



INSTALLED SIDE BAR.

Cleaning and care instructions:

Design:

Quality:

Keep your product clean. Do not use abrasive cleaners or polish. We recommend only non-abrasive automotive wax such as pure carnauba to avoid scratches or rust.