

INSTALLATION INSTRUCTIONS

37104 Sidebar

04 - C Chevy Colorado Crew Cab

Parts List:

QTY

- | | |
|---|--------------------------------------|
| (1) Sidebar set (Left & Right) | (2) Rear auxiliary mounting brackets |
| (2) Front mounting bracket (left & right) | (2) Bolt plates |
| (2) Rear mounting bracket (left & right) | |

- (1) Hardware kit including:
(4) 1/2 x 2" Hex head bolt
(6) 1/2" Flat washer
(6) 1/2" Lock washer
(2) 1/2" Hex nut

Tools required:

3/4" Socket Ratchet
18mm Socket

Instructions:

Aproximated installation time: 25 min.

1. Read and understand instructions completely before beginning installation.
2. Sidebar set consist of a driver and passenger side. The rear step is the closest to the bend. Be sure to determinate the correct side before installation.
3. Loosen the body mounting bolts from mounts located under the cab of the vehicle just enough to slide mounting brackets.
4. Place the front/rear mounting brackets up to the body mounts and retighten. Hand tighten at this moment.
5. To install auxiliary mounting bracket, locate existing hole in the frame of the vehicle as shown in Picture 3. Then place a bolt plate and secure rear auxiliary mounting bracket to the bolt plate using 1/2" flat & lock washers and hex nut. Secure the other end of the auxiliary mounting bracket to the tube and rear mounting bracket, using a 1/2 x 2" hex head bolts, flat and lock washers. Picture 4 & 5. Leave loose.
6. Place the sidebar up to the front mounting brackets. Bolt front mounting brackets, using 1/2 x 1 1/2" hex head bolt, flat and lock washers. Leave loose.
7. Make any final adjustments to the alignment of the sidebar and tighten all bolts. Repeat for the opposite side.
8. You may need to periodically re-tighten the bolts.

Assembly Diagram:

Picture 1

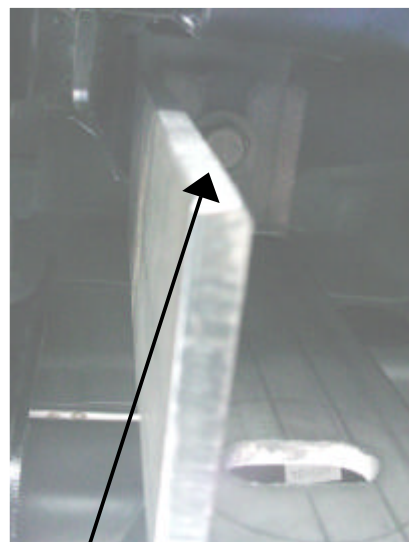
Front mounting bracket, passenger side



Existent bolt, untighten enough to locate the bracket.

Picture 2

Raear mounting bracket, passenger side.



Existent bolt, untighten enough to locate the bracket, or remove the bolt to locate easier the bracket on the bolt, tighten again.

Cleaning and care instructions:

Diseño:

Calidad:

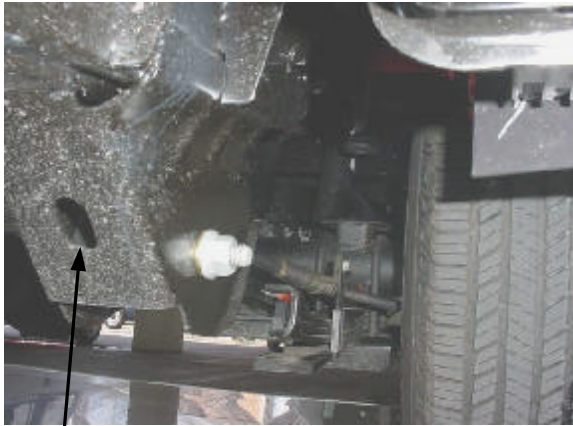
Protect the finish with a non-abrasive automotive wax, (e.g. Pure Carnauba) on a regular basis. The use of any soap, polish, or wax that contains an abrasive is detrimental to the finish, as the compounds scratch the finish and cause corrosion.

INSTALLATION INSTRUCTIONS

37104 Sidebar

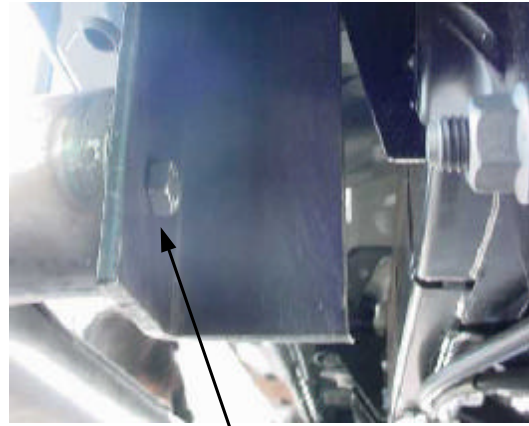
04 - C Chevy Colorado Crew Cab

Picture 3



Place a bolt plate inside this existing hole

Picture 4



Secure rear mounting bracket, auxiliary mounting bracket and sidebar using 1/2 x 2" hex head bolt



Auxiliary mounting bracket passenger side



Sidebar installed, driver side

Cleaning and care instructions:

Protect the finish with a non-abrasive automotive wax, (e.g. Pure Carnauba) on a regular basis. The use of any soap, polish, or wax that contains an abrasive is detrimental to the finish, as the compounds scratch the finish and cause corrosion.

Diseño:

Calidad: