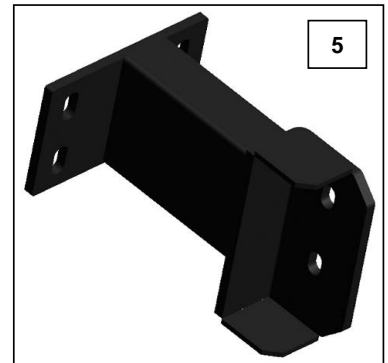
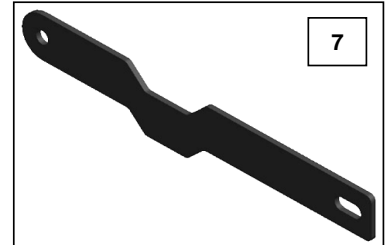


Do not attempt to install this product on any vehicle other than the one listed above!

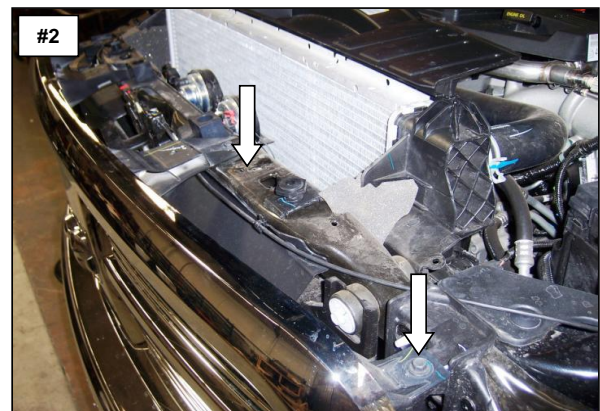
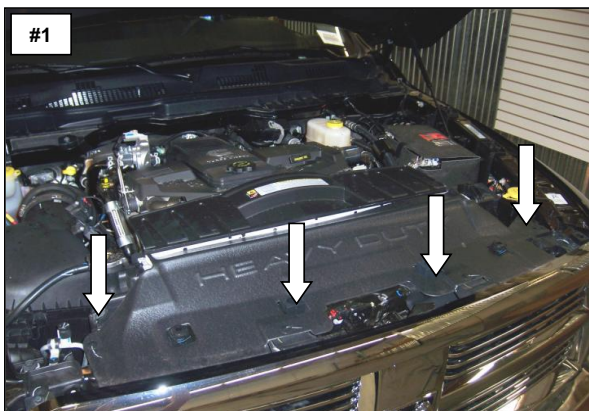
[illegible]

10mm, 13mm, 18mm & 3/4" Sockets.
3/4" Wrench.
Slotted Blade Screw Driver.
Ratchet & Ratchet Extension.

Read the installation instructions completely and verify that all the parts listed are accounted for. If you have defective, missing or damaged parts or need assistance, please contact Go Rhino Products for fast, friendly customer service at: 1-888-427-466 or email: warranty@gorhino.com

FACTORY BUMPER REMOVAL.

Step-2 Remove the (4) screws securing the top of the grille to the radiator support using a 10mm socket and ratchet. **Picture #2** Slightly rotate the top of the grille forward, then gently pull straight out on the lower section to unsnap the (2) lower clips. Remove the grille from the vehicle.



If the vehicle has these options or equipment:

Diesel Engine:

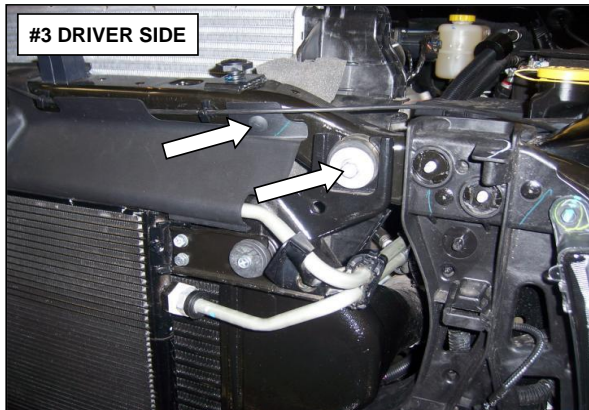
Remove the (2) plastic push in connectors securing the radiator shield to the radiator support using the tip of a screw driver and the bolts (1) per side securing the top of the intercooler to the radiator support using a 13mm socket and ratchet. **Picture #3.**

Fog Lights:

Disconnect the fog light wiring harness on the driver side of the factory bumper. **Picture #4.**

Engine Block Heater:

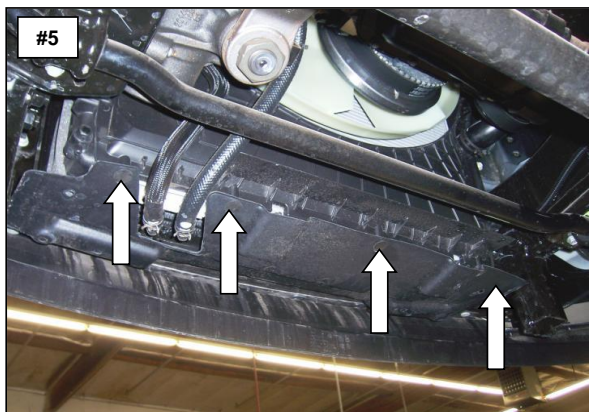
Remove the fasteners securing the power cord to the passenger side of the factory bumper. **Not Shown.**



Step-3 Remove the (4) plastic push in connectors securing the splash shield to the bottom of the radiator using the tip of a screw driver. Leave the splash shield attached to the factory bumper. **Picture #5**

Step-4 Remove the nuts (2) per side and paired bolts securing the bumper brackets to the frame using an 18mm socket and ratchet. **Picture #6** Remove the bumper from the vehicle and set it aside. Retain the nuts and paired bolts to attach the replacement bumper brackets.

Note: Diesel engine models will require slightly lifting the intercooler and move it to one side at a time to remove the paired bolts



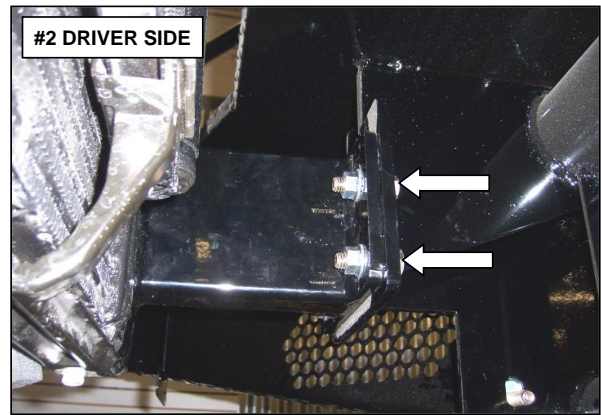
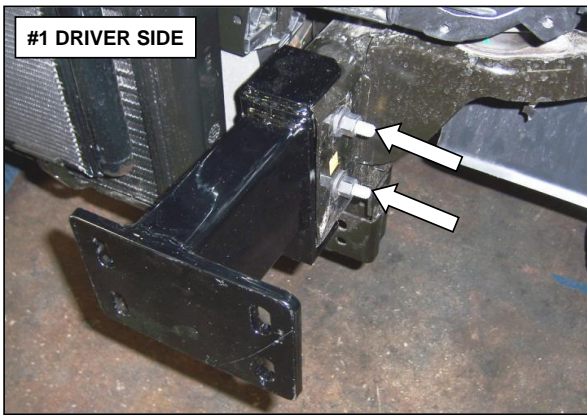
REPLACEMENT BUMPER INSTALLATION.

Step-1 Install the driver's side frame bracket by positioning the bracket over the frame, align the holes and secure the bracket using the factory paired bolts and nuts. **Picture #1** Leave the nuts loose for final adjustment. Repeat this step to install the passenger side frame bracket.

Note: Diesel engine models will require slightly lifting the intercooler and move it to one side at a time to install the paired bolts.

It may be necessary to slightly grind the weld on the top of the frame to allow clearance for the frame bracket.

Step-2 With assistance, lift the replacement bumper up to the frame brackets and secure the bumper to each bracket using (4) ½" x 1 1/2" hex bolts, (4) ½" flat washers and (4) ½" flange nuts. **Picture #2** Leave the nuts and bolts loose for final adjustment.



Step-3 Install one of the auxiliary brackets on the driver side by removing the nut from the lower paired bolt, position the hole in the squared end of the bracket over the threads of the bolt and re-install the nut. Secure the opposite end of the auxiliary bracket to the hole in the bumper using (1) $\frac{1}{2}$ " x 1 $\frac{1}{2}$ " hex bolt, (1) $\frac{1}{2}$ " flat washer and (1) $\frac{1}{2}$ " flange nut. **Picture #3** Leave the nuts and bolt loose for final adjustment. Repeat this step to install the remaining auxiliary bracket on the passenger side.

Step-4 Re-install the intercooler, radiator shield, grille and radiator dust cover using the factory fasteners.

If the vehicle has these options or equipment:

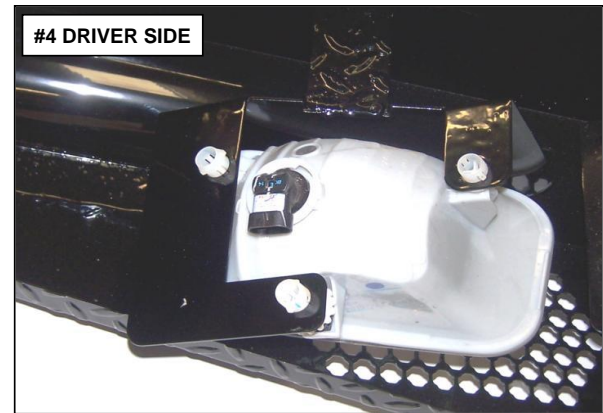
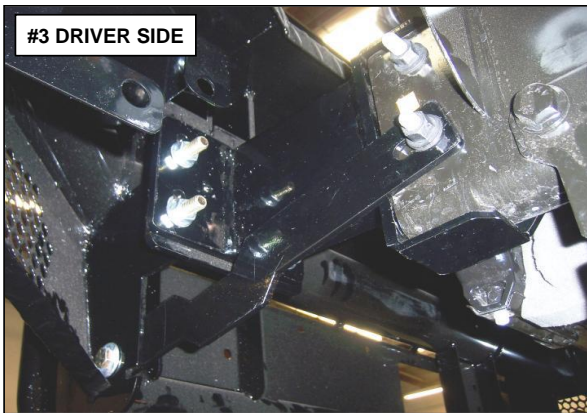
Fog lights

Remove the bolts securing the fog lights and brackets to the factory bumper. Remove the fog lights from the brackets and discard the brackets.

Install the fog lights to the brackets located on the back side of the replacement bumper using the factory retainers. **Picture #4** Re-connect the fog light wiring.

Tow Hooks

Remove the nuts, bolts and tow hooks from the factory bumper. Install the tow hooks to the replacement bumper using the factory nuts and bolts. **Picture #6**



Step-5 Align the replacement bumper with the vehicle and tighten all nuts and bolts. **Picture #5**

Remember to check and retighten the nuts and bolts periodically.



FRONT BUMPER REPLACEMENT INSTALLED.



TOW HOOK INSTALLED.