

INSTALLATIONS INSTRUCTIONS

37121 (1 - 3 - 4 - 8 - 9)

DODGE RAM 1500 REG CAB. P. U. 2/4 WD 02 - 08

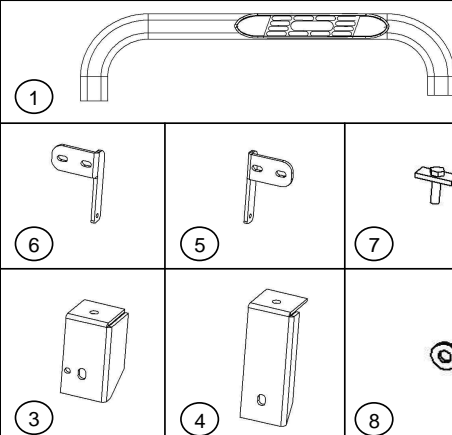
Parts list:

ITEM	QTY.	CODE	DESCRIPTION	TORQUE MAX.
1	1	4089D	Side Bar driver side	-
2	1	4089P	Side Bar passenger side	-
	1	4089TK	Brackets kit includes:	-
3	2	4097F	Main bracket front	-
4	2	4097R	Main bracket rear	-
5	2	40971	Support bracket passenger side	-
6	2	40972	Support bracket driver side	-
7	4	370200AA	3/8 x 1 1/4" T Bolt	-
8	2	40974	D. Int 1/2" D. Ext. 1 1/2" Spacer	-
	1	KTE-G4089	Hardware kit includes:	-
9	4		1/4 x 3/4" Hex head bolt	9 Lb.Ft
10	4		1/4" Flat washers	-
11	4		3/8" Lock washers	-
12	4		3/8" Flat washers	-
13	4		3/8" Hex nut	30 Lb.Ft
14	4		1/2 x 2" Hex head bolt	70 Lb.Ft
15	8		1/2" Flat washers	-
16	8		1/2" Lock washers	-
17	4		12mm x 120mm Hex head bolt	75 Lb.Ft

Required Tools (no included)

DESCRIPTION	QTY.
9/16" Socket / wrench	1
3/4" Socket / wrench	1
1/2" Socket / wrench	1
17mm Socket	1
Ratchet	1
Extension	1

ILLUSTRATION 1



Instructions:

Approximate installation time: 40 min.

1.- Before beginning the installation, please read all directions carefully and verify that all necessary hardware is accounted for. If any parts are missing, stop the installation and contact your distributor immediately.

2.- Beginning with the driver side, locate and remove the front and rear body mount bolts from underside of cab.

3.- Loosely attach 4097F front and 4097R rear mounting brackets to the body mounts using the 12mm bolts and 1/2" washers as shown.

NOTE: Use the 1/4" thick washers with the front mounting bolts.

4.- Loosely attach 4089D driver side step, to the mounting brackets using the 1/2 x 2" bolts, flat washers and lock washers.

5.- Locate and remove the rubber body plugs (1 front and 1 rear) from the inside face of the body rocker panel.

6.- Attach the 40972 support brackets to the body using the 3/8 x 1 1/4 T bolts, washers nut and to the side step using 1/4" hex bolt.

NOTE: Use 40971 for the passenger side front and rear.

7.- Align the side step with the vehicle and then tighten all nuts and mounting bolts.

8.- Repeat the above steps for the passenger side.

9.- Fill out the warranty card included and place it inside your vehicle.

Cleaning and care instructions:

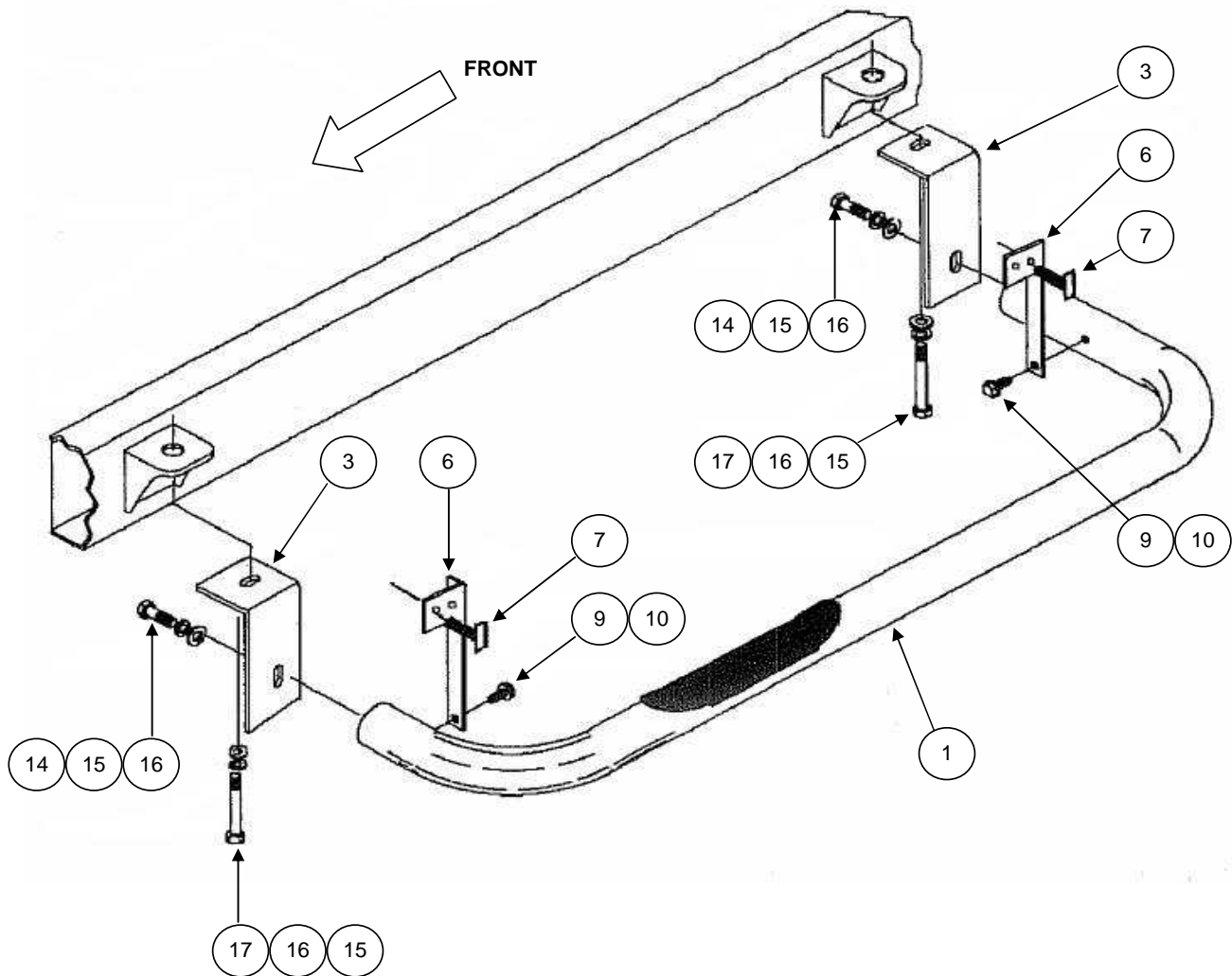
Design :

Quality:

Keep your product clean. Do not use abrasive cleaners or polish. We recommend only non-abrasive automotive wax such as pure carnauba to avoid scratches or rust.

INSTALLATIONS INSTRUCTIONS
37121 (1 - 3 - 4 - 8 - 9)
DODGE RAM 1500 REG CAB. P. U. 2/4 WD 02 - 08

NOTE: Illustration driver side.



Cleaning and care instructions:

Design :

Quality:

Keep your product clean. Do not use abrasive cleaners or polish. We recommend only non-abrasive automotive wax such as pure carnauba to avoid scratches or rust.