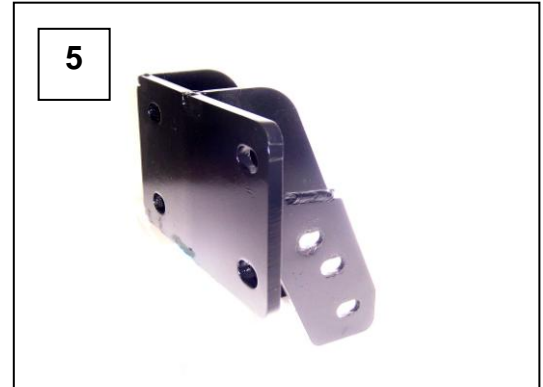


Installation Instructions
Front Bumper Replacement Part # 15479T
2011-12 Chevrolet 2500HD, 3500HD 4x2/4x4

Do not attempt to install this product on any vehicle other than the one listed above!

Parts List

Item	Qty.	Part #	Description	Torque
1	14		½" x 1 ½" Hex Bolt	65 Ft. Lbs.
2	14		½" Flat Washer	
3	14		½" Flange Nut	65 Ft. Lbs.
4	1		Replacement Bumper Assembly	
5	1		Driver Side Frame Bracket	
6	1		Passenger Side Frame Bracket	
7	2		Auxiliary Bracket	



Tool Required:

7mm, 10mm, 15mm, 18mm, 21mm & 3/4" Sockets
18mm & 3/4" Wrench
Slotted Blade Screw Driver
Ratchet & Ratchet Extension

Approximate installation time: 60 min

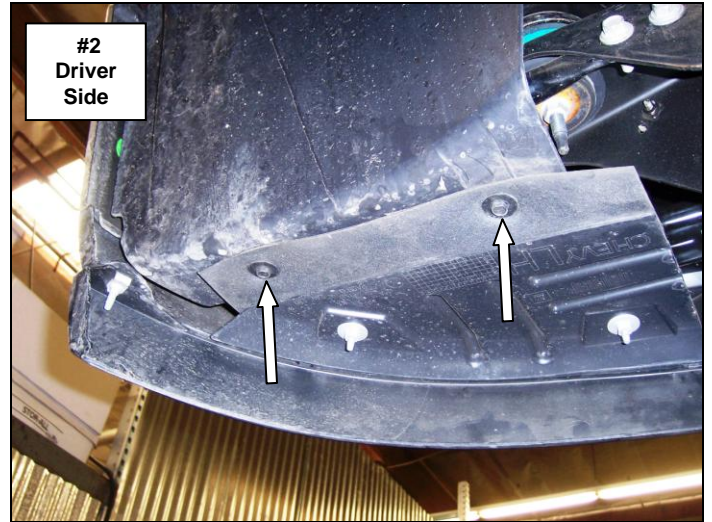
Read the installation instructions completely and verify that all the parts listed are accounted for. If you have defective, missing or damaged parts or need assistance, please contact Go Rhino Products for fast, friendly customer service at: 1-888-427-466 or email: warranty@gorhino.com

It is the customer's responsibility to protect the finish with a regular application of a nonabrasive polish compatible with the products finish.

Front Bumper Removal

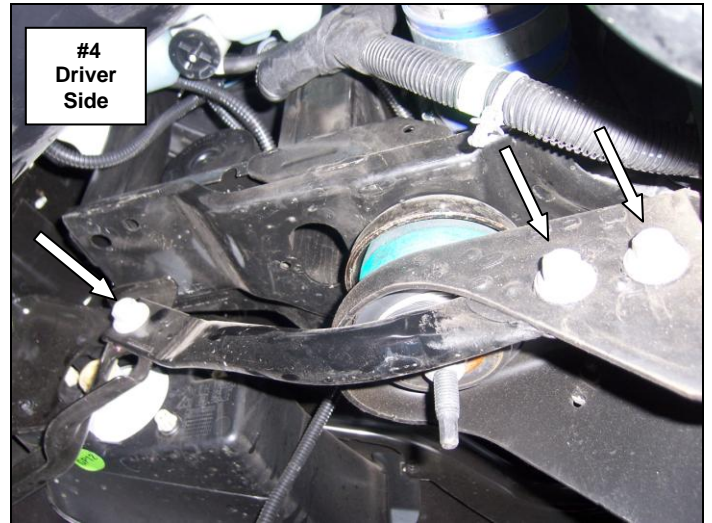
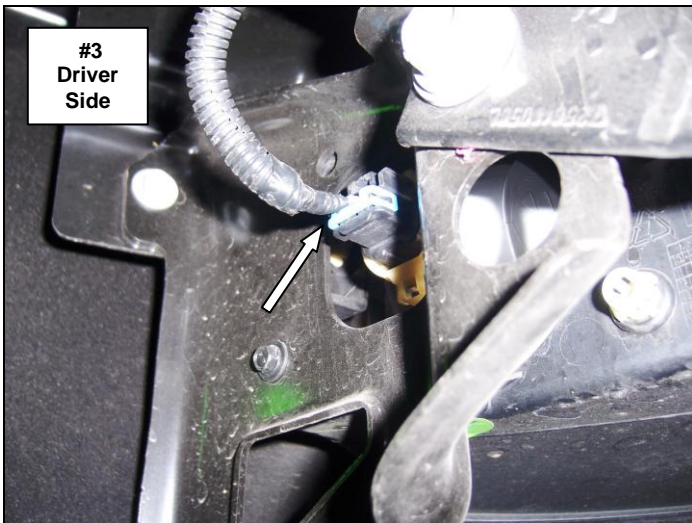
Step-1 Detach the rubber splash shield by removing the (5) plastic push in connectors securing the shield to the center of the bumper. **Picture #1**

Step-2 Remove the screws (2) per side securing the plastic inner fender to the bumper using a 10mm socket and ratchet. **Picture #2**



Step-3 If equipped, disconnect the wiring harness from each of the fog lights. **Picture #3**

Step-4 Remove the bolts (3) per side securing the outer bumper support bar to the body mount bracket and to the bumper using a 15mm socket and ratchet. **Picture #4**



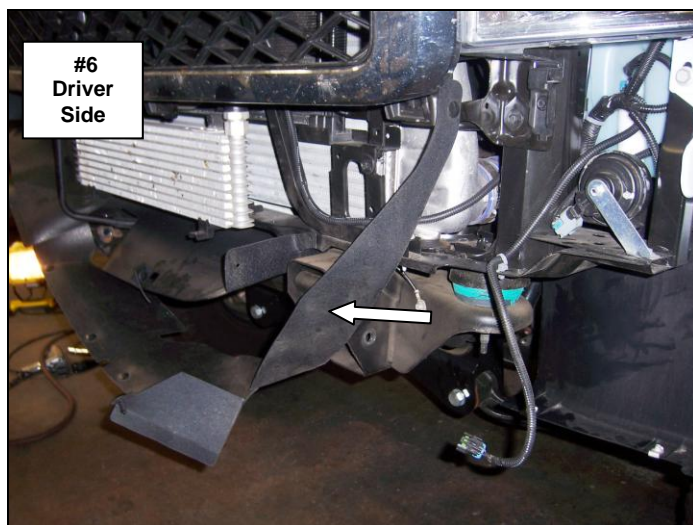
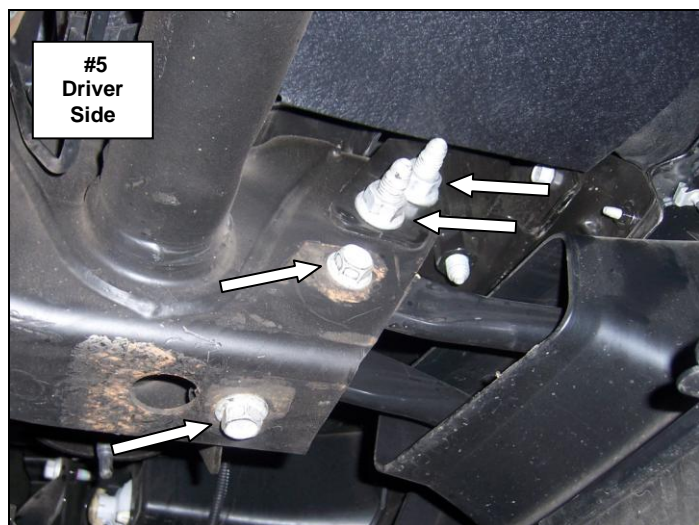
Step-5 Remove the nut and bolts' securing each of the tow hooks to the frame using an 18mm wrench, socket, and ratchet. **Picture #5**
Pull the hooks out from the front and remove from the vehicle. Retain the nuts and bolts to attach the tow hooks to the replacement bumper.

Step-6 Remove the nuts (2) per side from the paired bolts securing the bumper brackets to the frame using a 21mm socket and ratchet. **Picture #5**

Caution: Do not remove the paired bolts.

Step-7 With assistance support the bumper, remove the paired bolts; pull the bumper down, and forward away from the vehicle. Retain the nuts and paired bolts to attach the replacement bumper brackets.

Step-8 Remove the (3) remaining plastic push in connectors and the rubber splash shield from the vehicle. **Picture #6** Discard the splash shield.



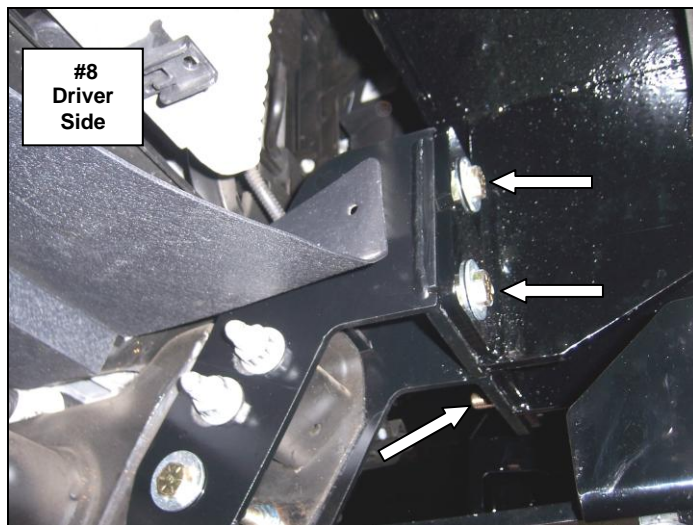
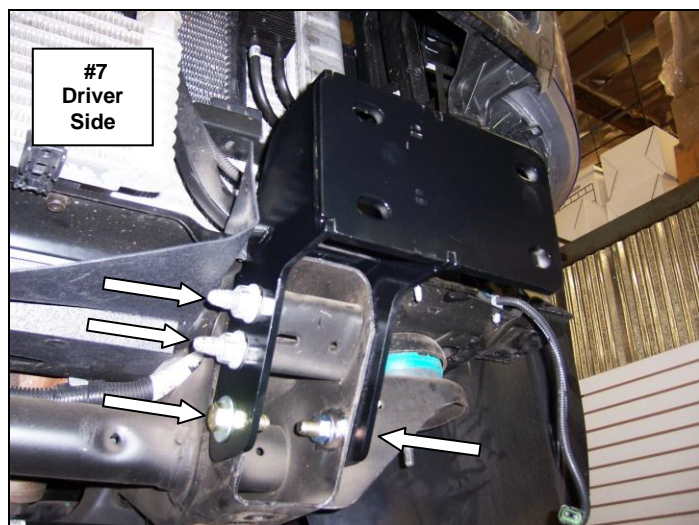
Replacement Bumper Installation

Step-1 Install the driver's side frame bracket by positioning the bracket over the frame, align the holes and secure the bracket to the frame using the factory paired bolts and nuts, and (2) ½" x 1 ½" hex bolts, (2) ½" flat washers and (2) ½" flange nuts. **Picture #7**

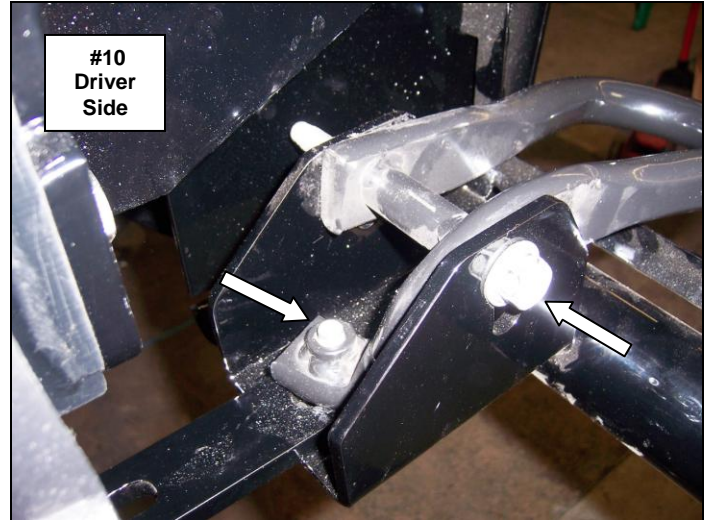
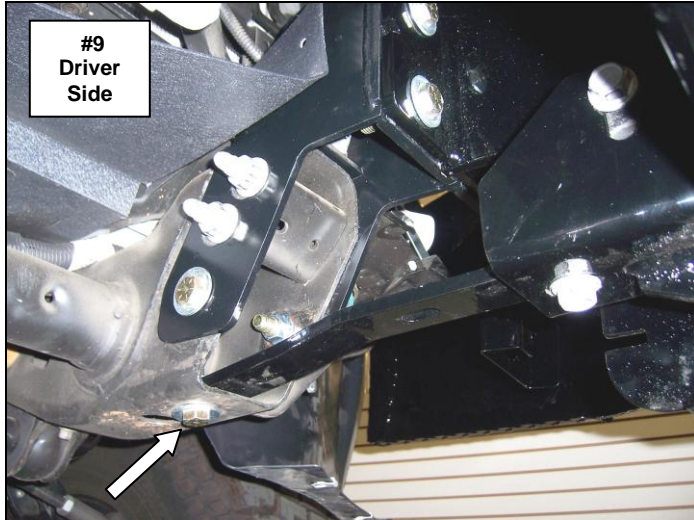
Leave the nuts and bolts loose for final adjustment. Repeat this step to install the passenger side bracket.

Step-2 With assistance, lift the replacement bumper up to the frame brackets and secure the bumper to each bracket using (4) ½" x 1 ½" hex bolts, (4) ½" flat washers and (4) ½" flange nuts. **Picture #8**

Leave the nuts and bolts loose for final adjustment.



Step-3 Install the auxiliary brackets by positioning the end with the single hole inside the frame and the opposite end on top of the bracket welded to the lower tube of the replacement bumper. Align the holes and secure the auxiliary bracket to the frame using (1) ½" x 1 ½" hex bolt, (1) 1/2" flat washer and (1) ½" flange nut. **Picture #9** Position the tow hook on top of the auxiliary bracket, align the holes and secure the tow hook and auxiliary bracket to the bumper bracket using the factory tow hook nut and bolts. **Picture #10** Leave the nuts and bolts loose for final adjustment.



Step-4 If equipped with fog lights, remove the outer bumper brackets and the plastic housing and fog light assemblies from the factory bumper. Remove each of the fog lights from the plastic housing and install them to the brackets located on the backside of the replacement bumper using the factory retainers. **Picture #11** Reconnect the fog light wiring.

Step-5 Align the replacement bumper with the vehicle and tighten all nuts and bolts. **Picture #12**

Remember to check and retighten the nuts and bolts periodically.

